

THE EXECUTIVE

Tuesday, 24 May 2005

Agenda Item 7. Performance Monitoring 2004/05 (Pages 1 - 48)

The Performance Monitoring graphs will be circulated to Members under separate cover and will also be made available on the Internet, in the Members' Rooms and at public libraries.

Contact Officer: Alan Dawson
Telephone: 020 8227 2348
Fax: 020 8227 2171
Minicom: 020 8227 2685
E-mail: alan.dawson@lbbd.gov.uk

This page is intentionally left blank

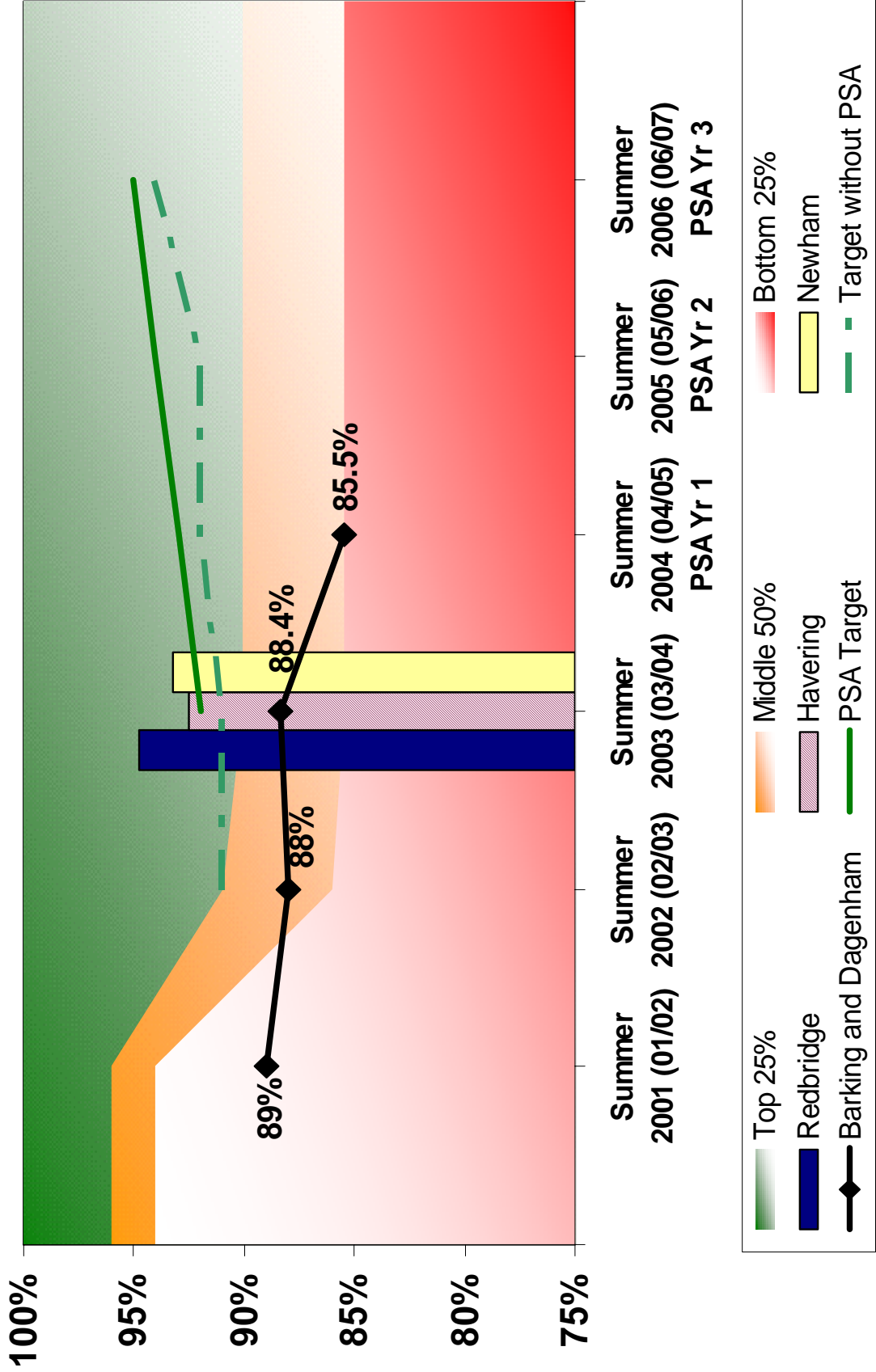
Presentation to Executive

24th May 2005

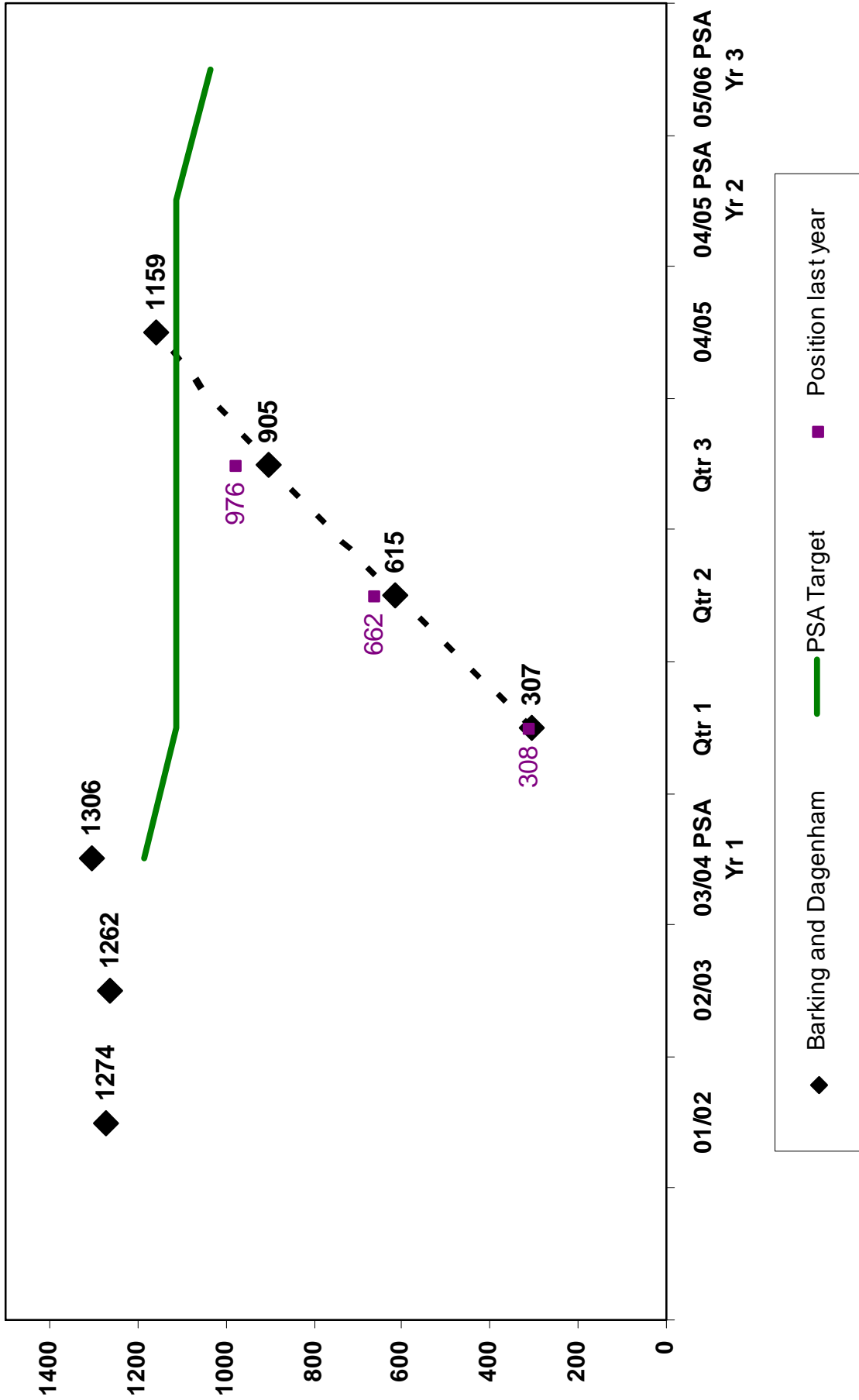
LPSA Targets

PSA

PSA Target 2 (BV 39) - Percentage of 15 year old pupils in schools maintained by the local education authority achieving 5 GCSE's or equivalent at grades A* to G including English & Maths

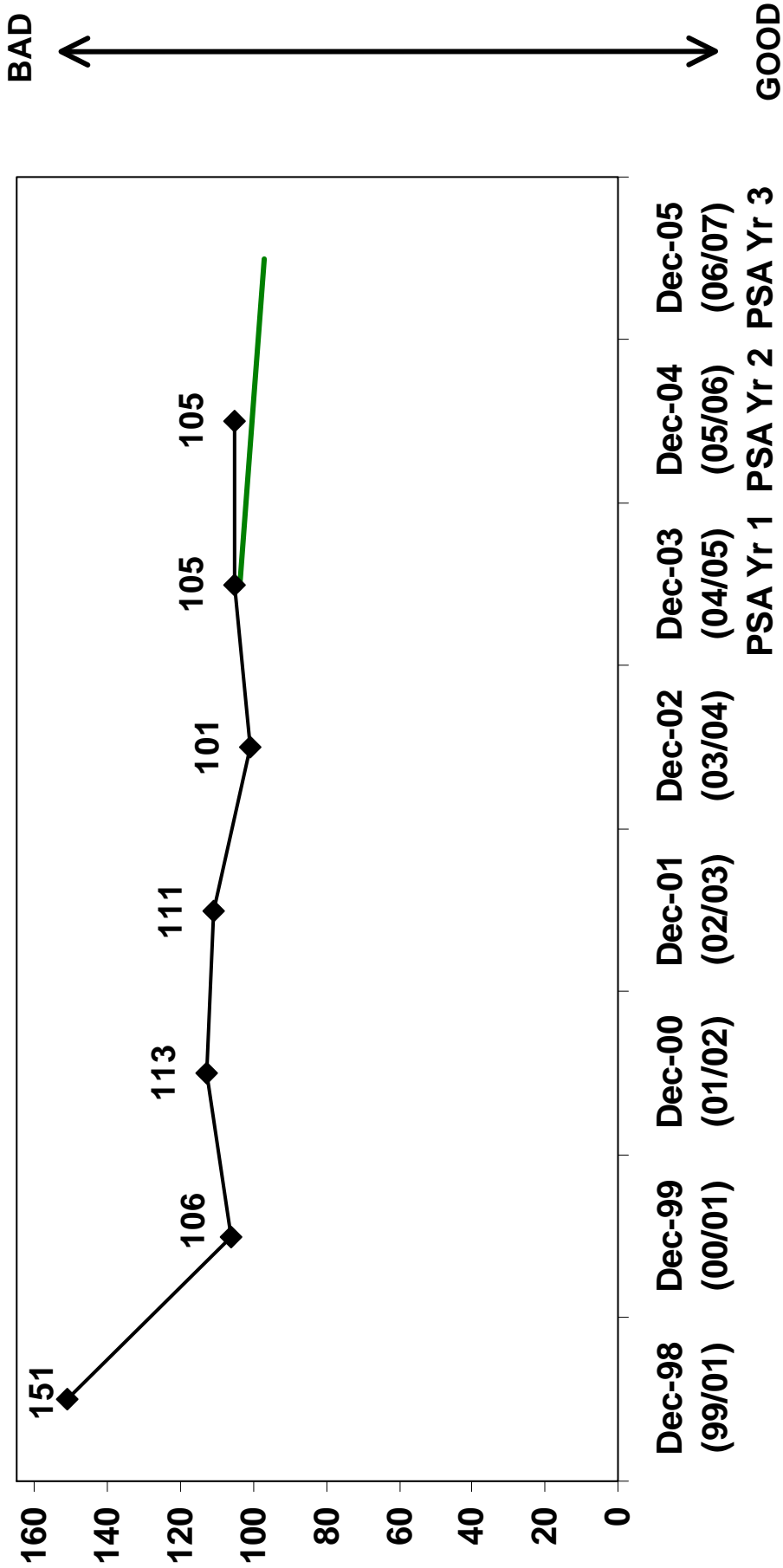


PSA Target 3 - Number of domestic burglaries (cumulative)



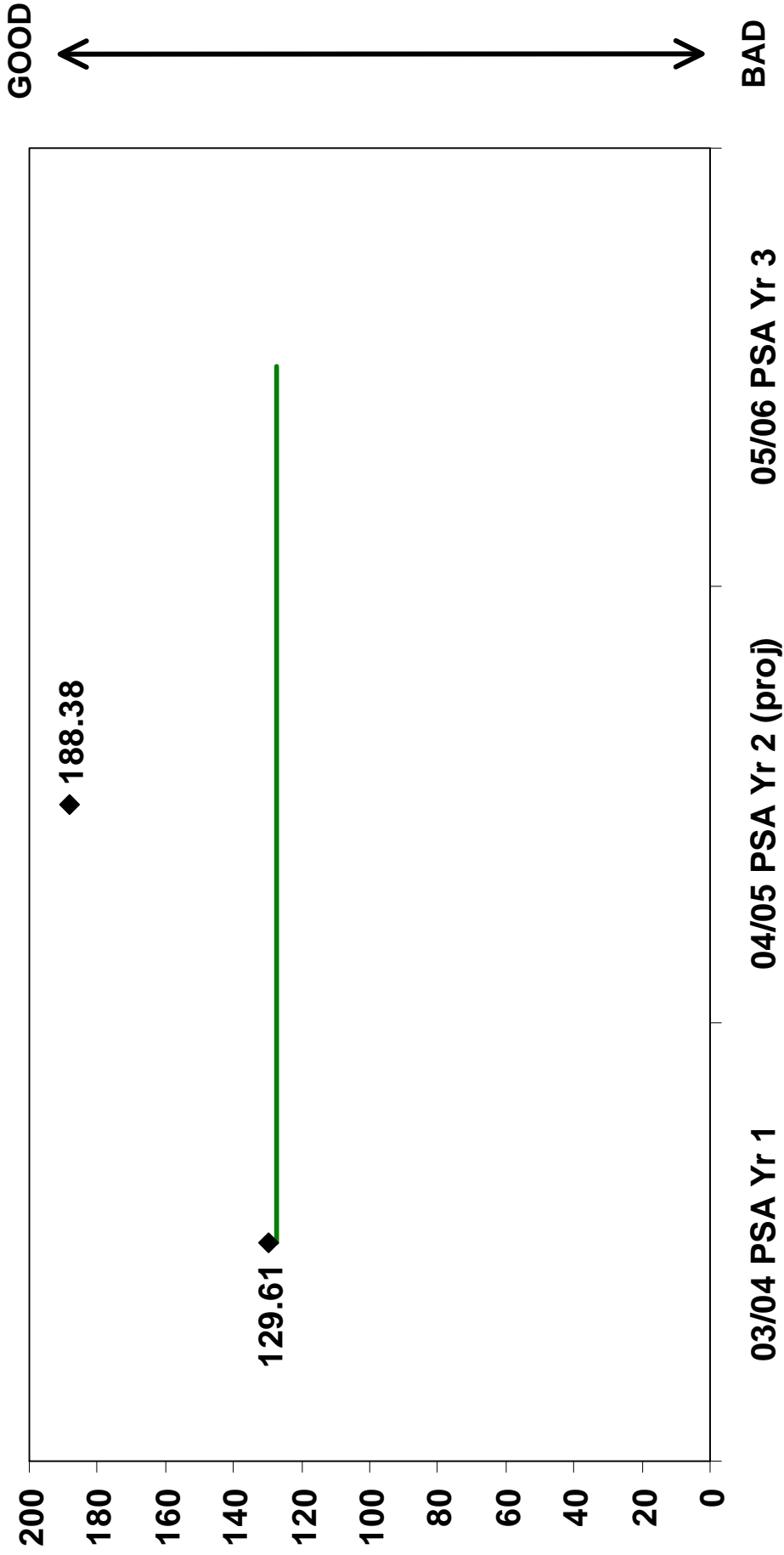
PSA

PSA Target 4 - Number of people killed or seriously injured (KSI) on the roads in Barking & Dagenham



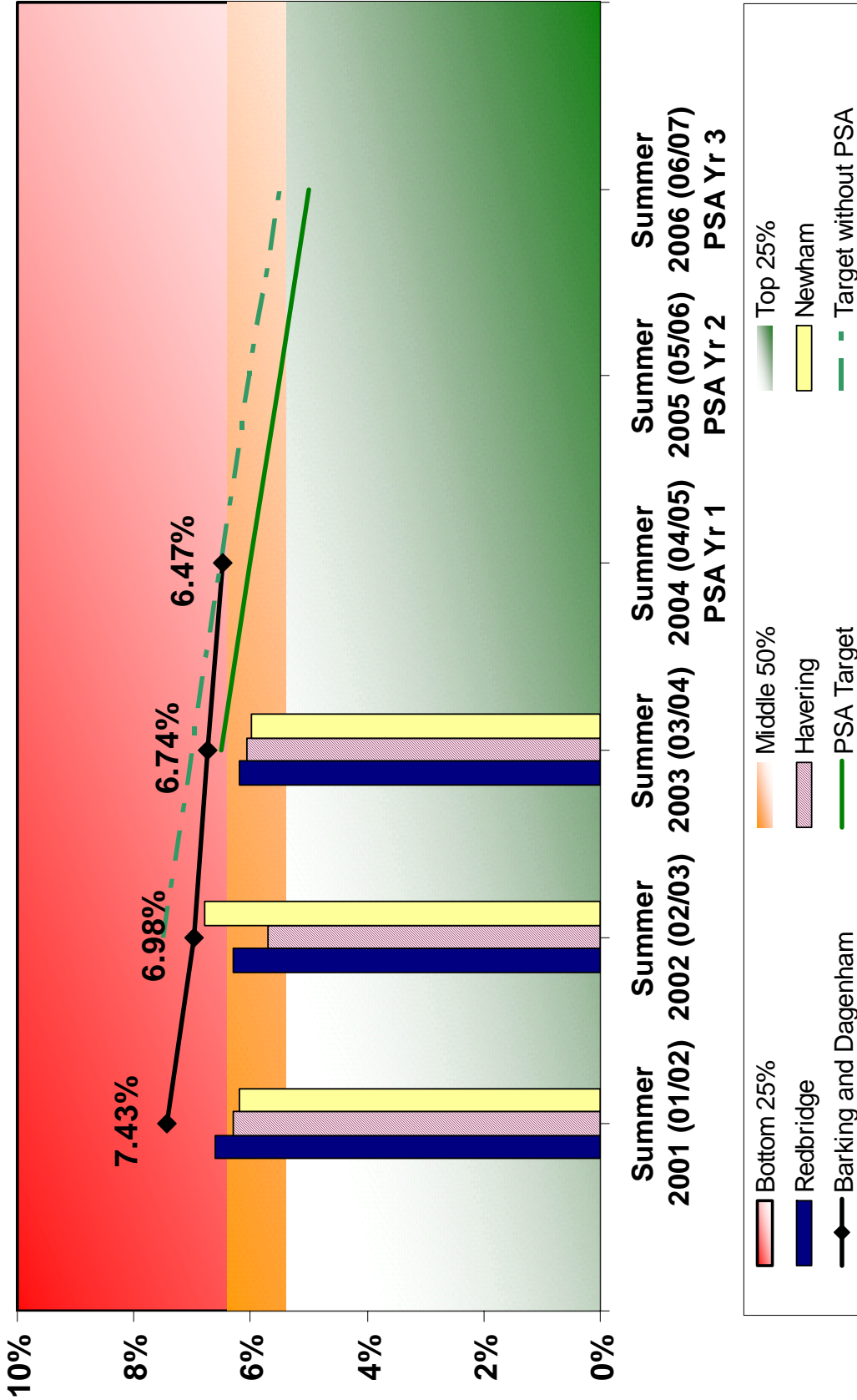
PSA

PSA Target 5 - Improve cost effectiveness across the Council (the graph measures the change in the performance index)



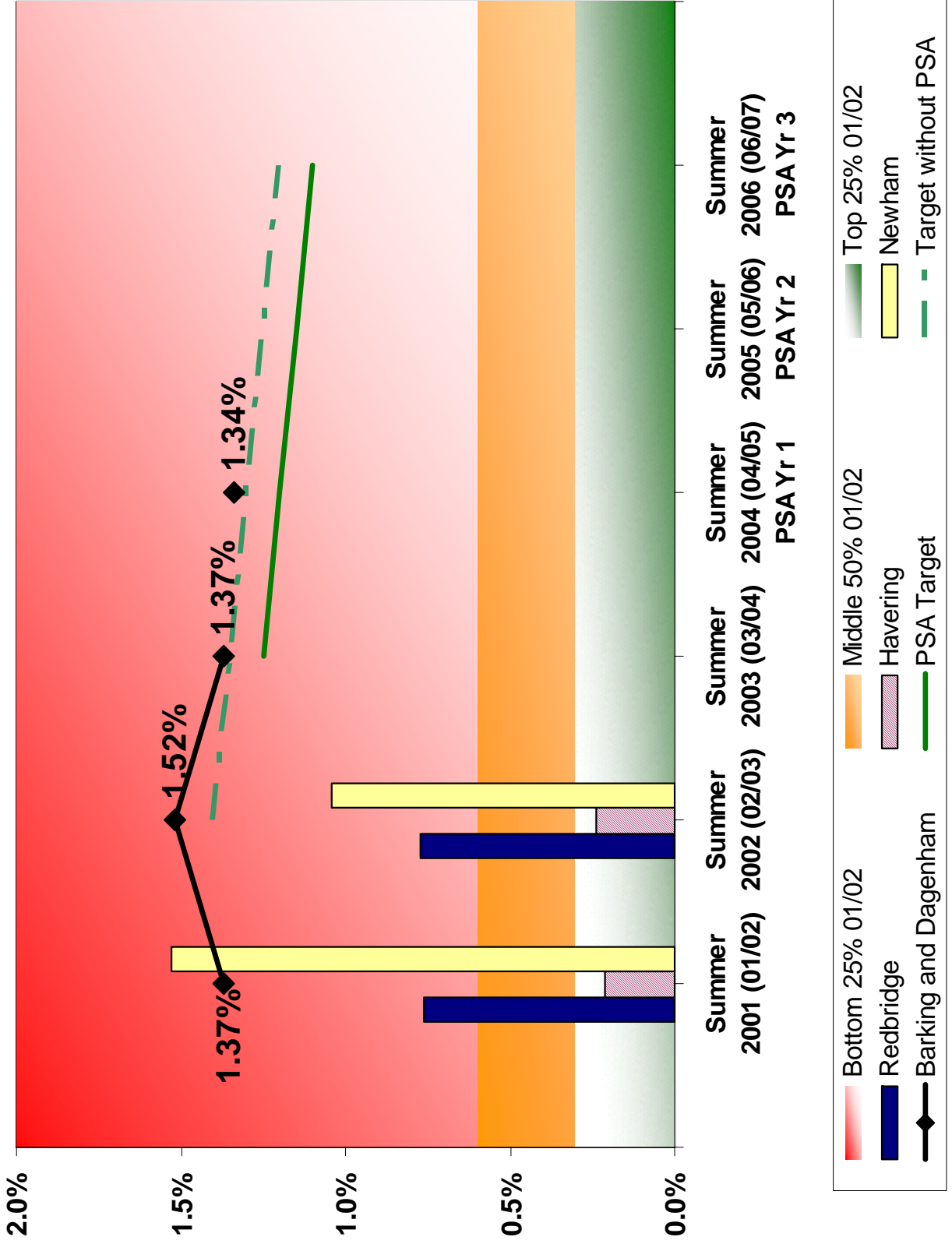
PSA

PSA Target 6 (i) [BVPI 46] - Percentage of half days missed due to total absence in primary schools



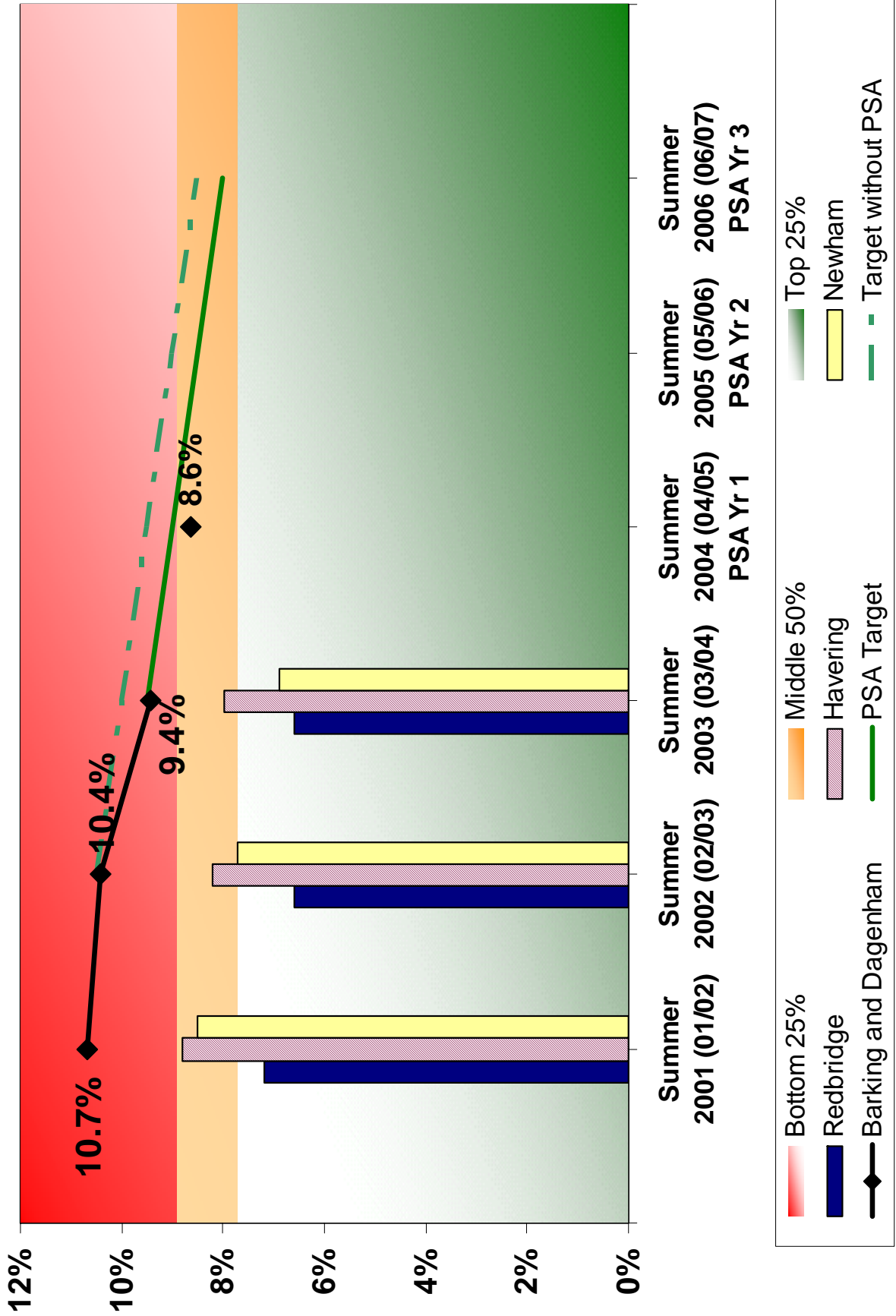
PSA

PSA Target 6 (ii) - Percentage of half days missed due to unauthorised absence in primary schools



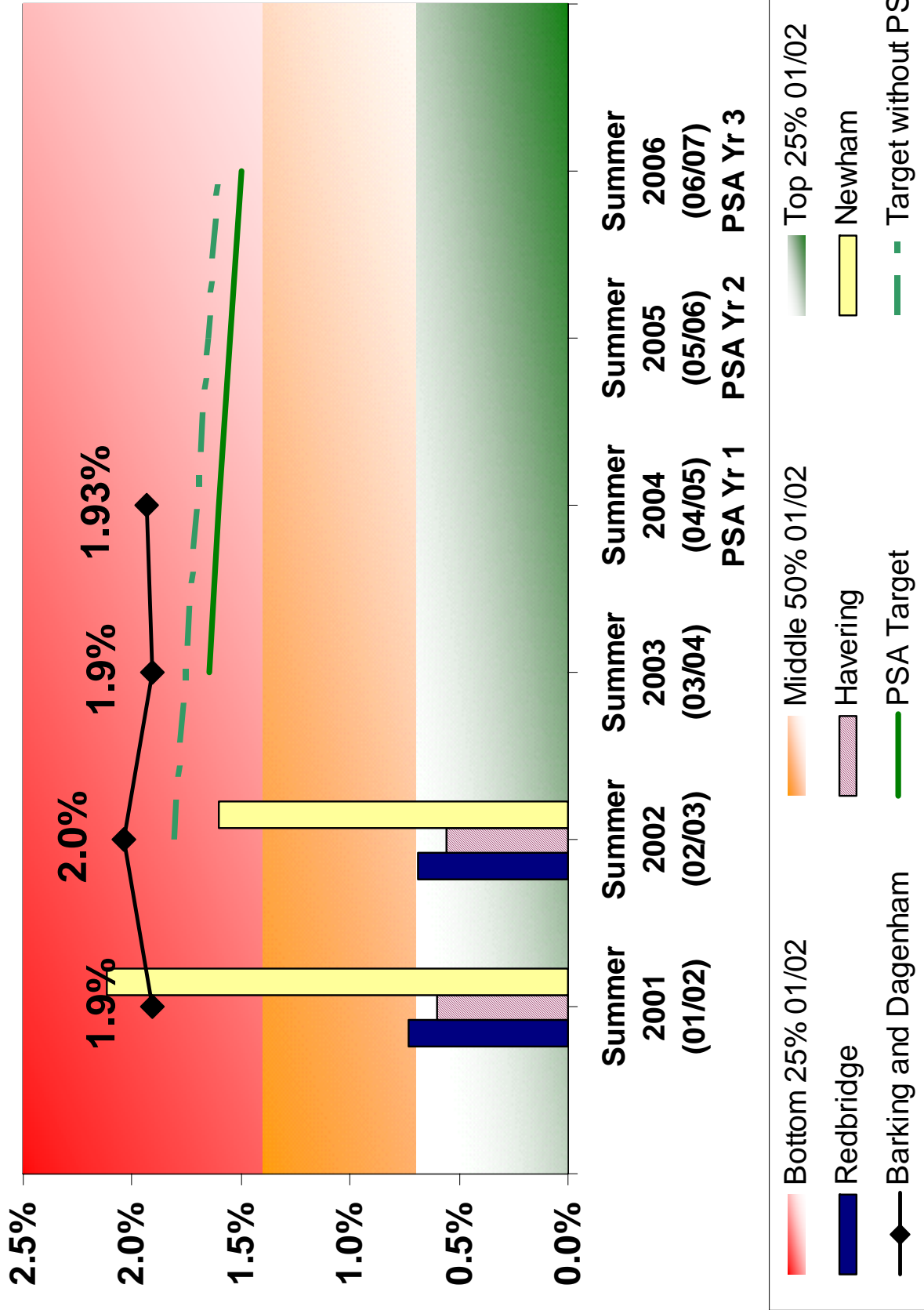
PSA

PSA Target 6 (iii) [BVPI 45] - Percentage of half days missed due to total absence in secondary schools



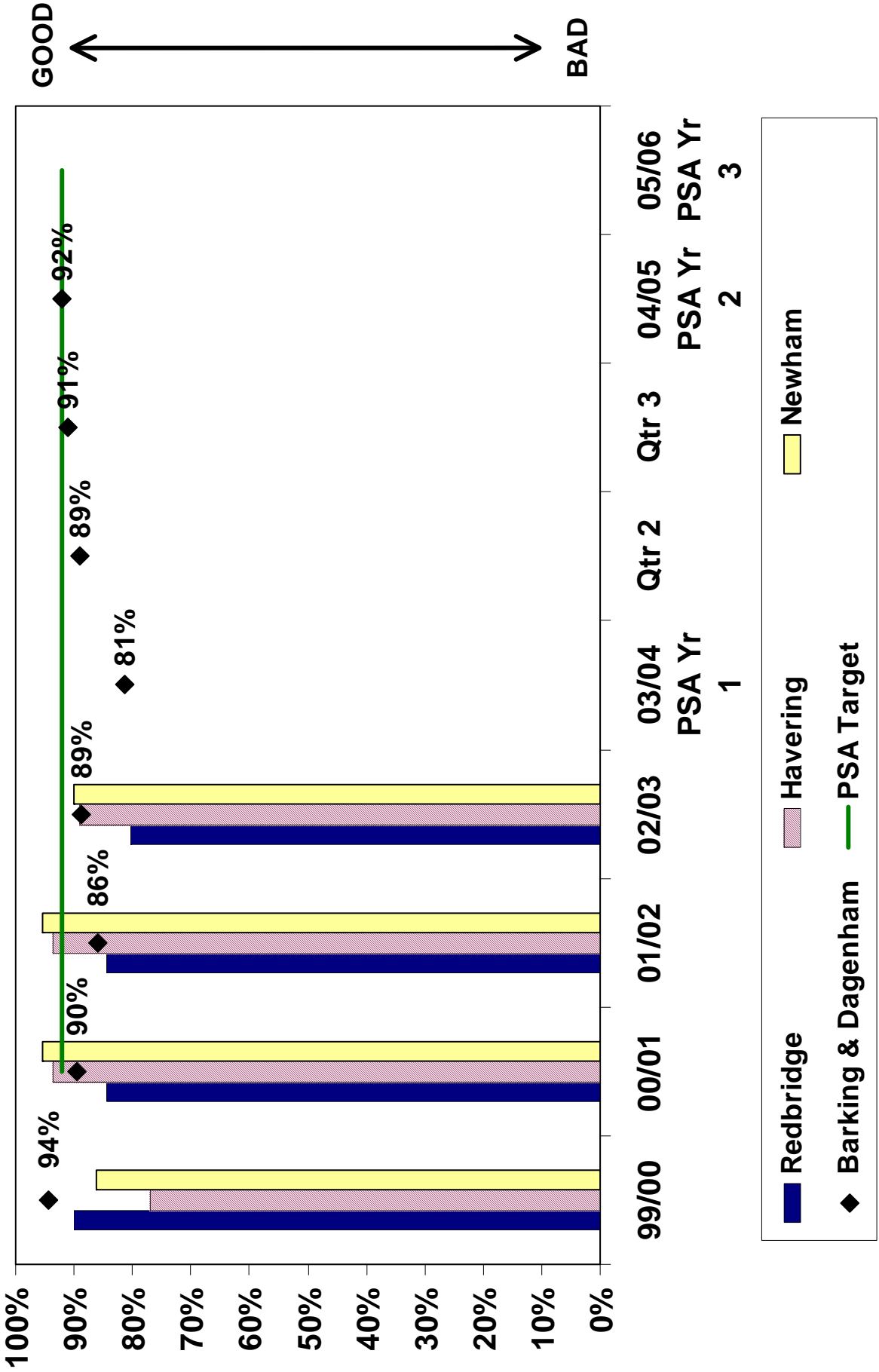
PSA

PSA Target 6 (iv) - Percentage of half days missed due to unauthorised absence in secondary schools



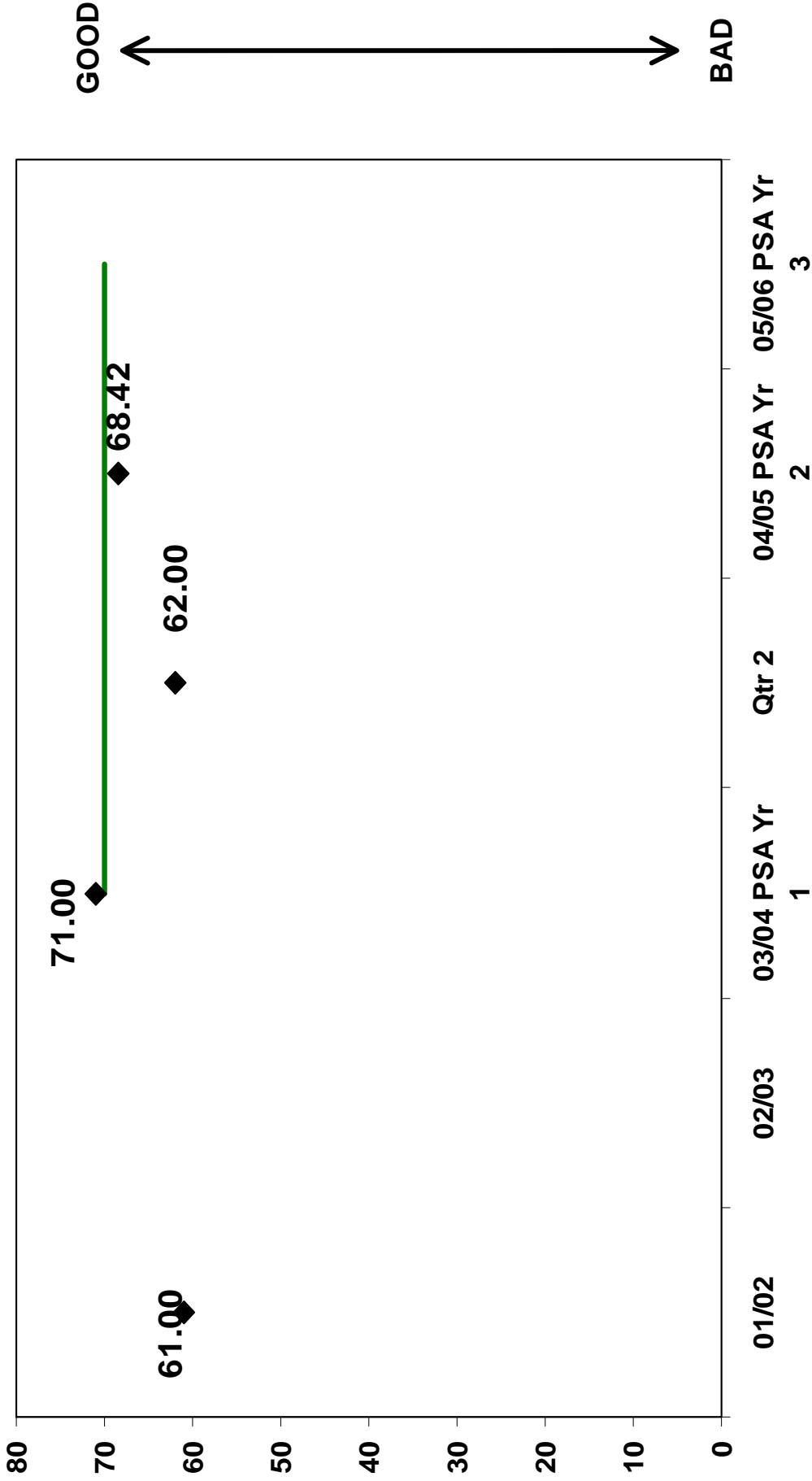
PSA

PSA Target 8 (1) - Percentage of highways that are either of a high or acceptable standard of cleanliness (ACPI-E1)



PSA

PSA Target 8 (2) - Cleanliness Index (Encams)



GOOD

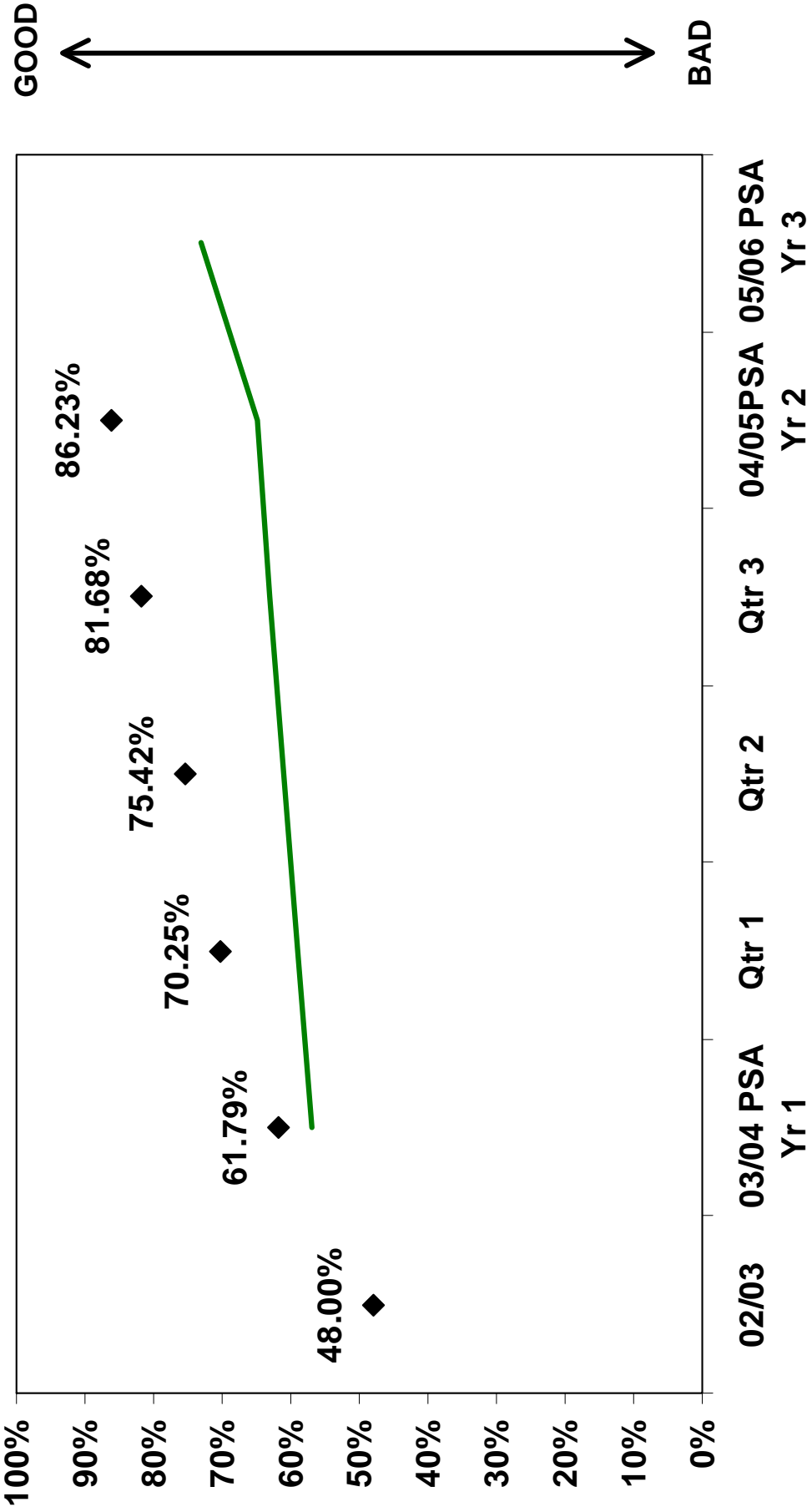
BAD

◆ Barking & Dagenham

— PSA Target

PSA

PSA Target 9 (1) - Percentage of abandoned vehicles removed within 5 working days of the report to the Council (cumulative over 3 year period of PSA)



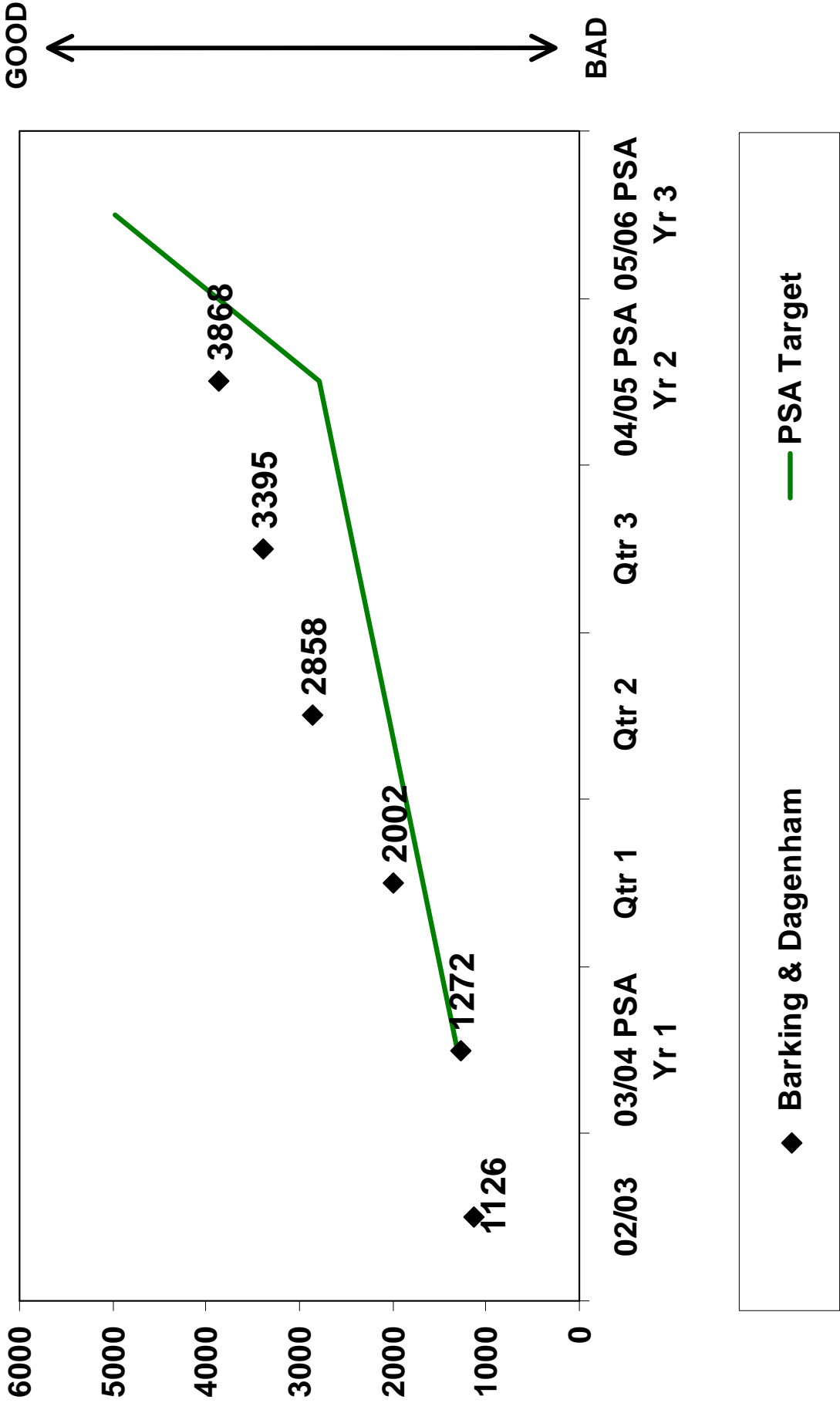
◆ Barking & Dagenham

— PSA Target

PSA

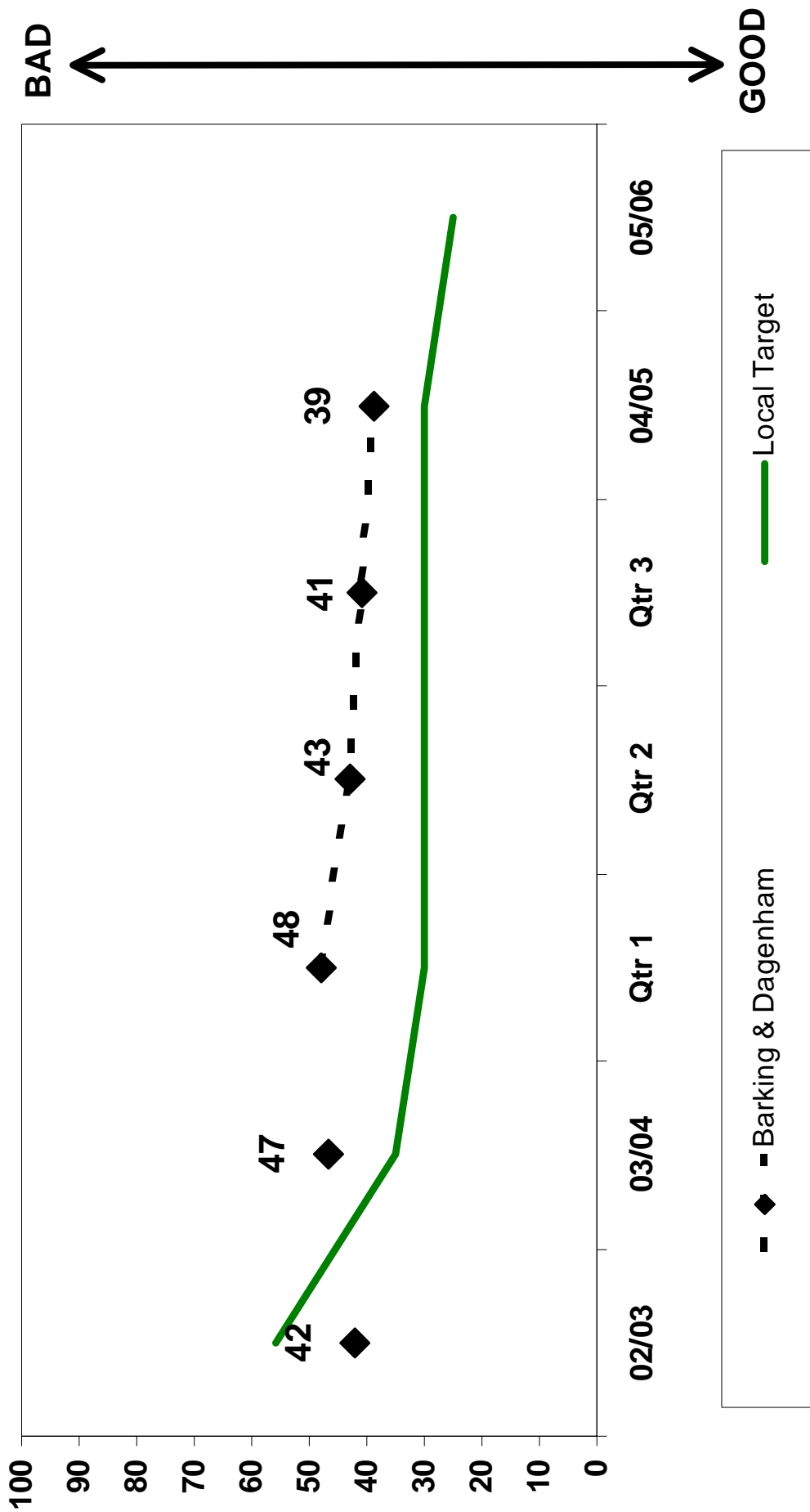


PSA Target 9 (2) - Number of unlicensed vehicles for which revenue is recovered by DVLA as a result of action by Barking & Dagenham Council (cumulative over 3 year period of PSA)



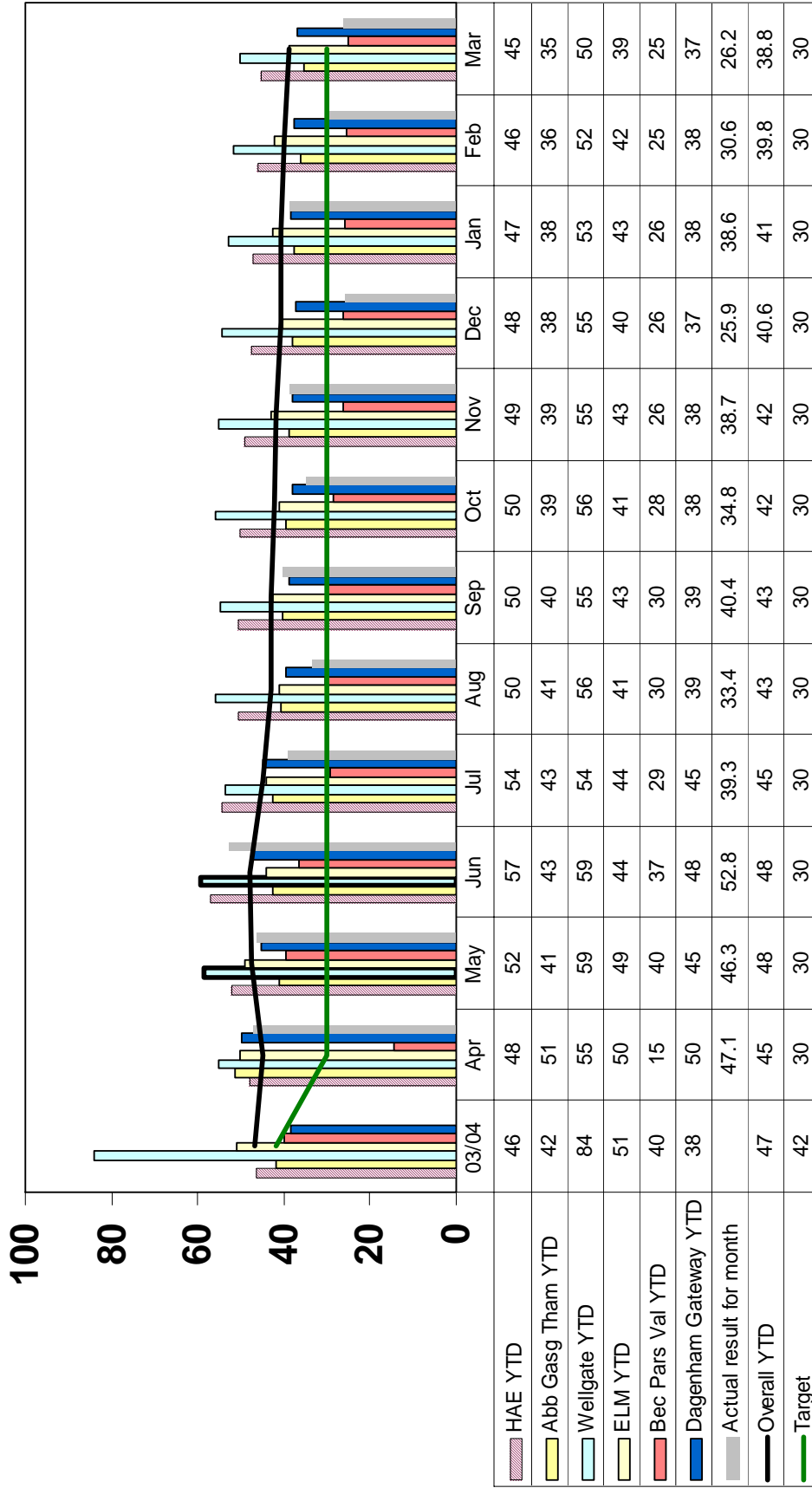
PSA

HOUSING & HEALTH - Housing Landlord Services
PSA Target 10 - Average time taken to relet dwellings available for letting or awaiting minor repairs (calendar days) [cumulative]



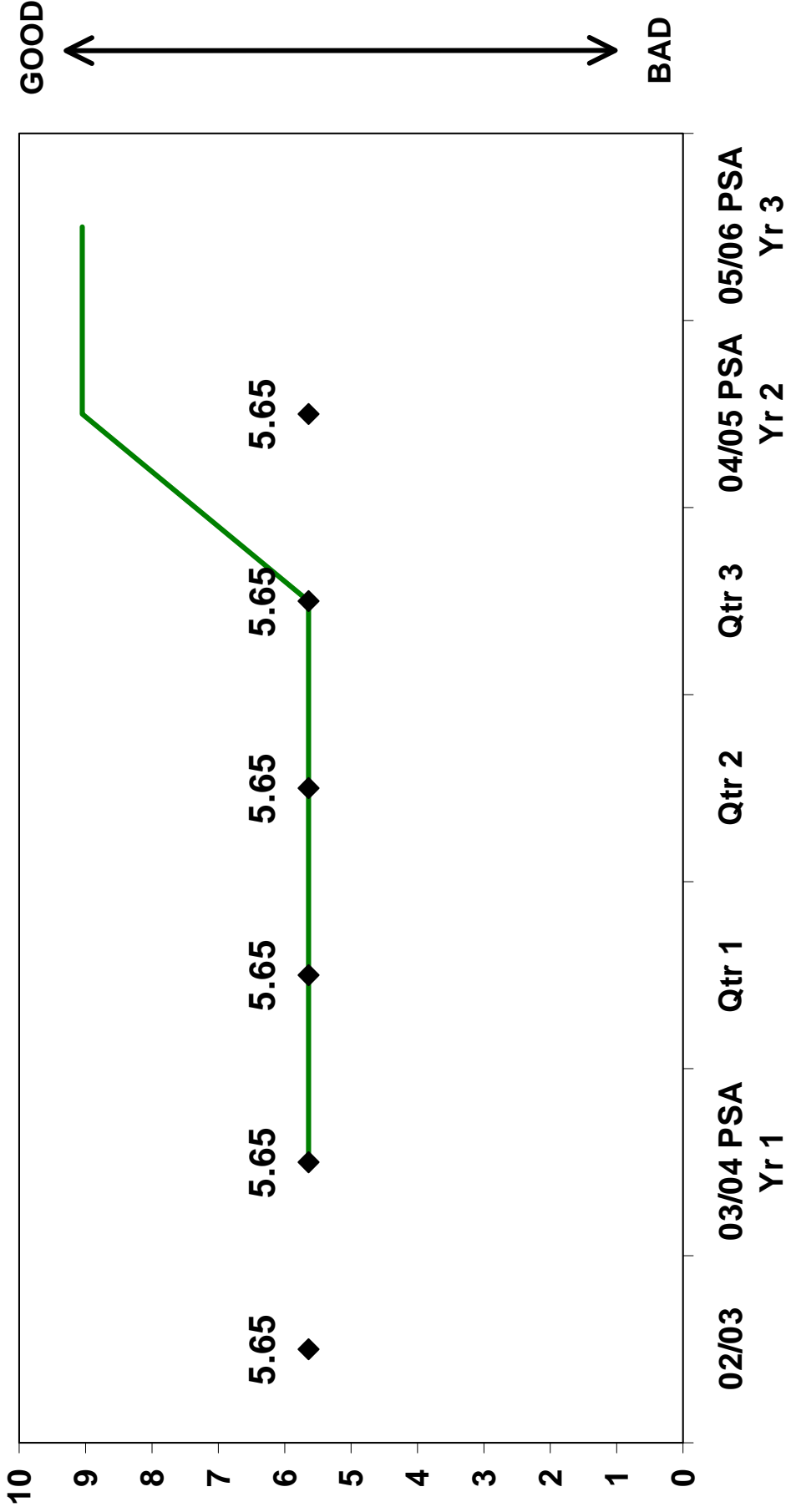
HOUSING & HEALTH - Average Relet Times

Average relet times in calendar days (Housemark Definition) - YTD performance



PSA

**PSA Target 12 (1) - Improving the natural environment
Number of hectares of woodland cover in the Borough
(cumulative since 02/03 baseline)**

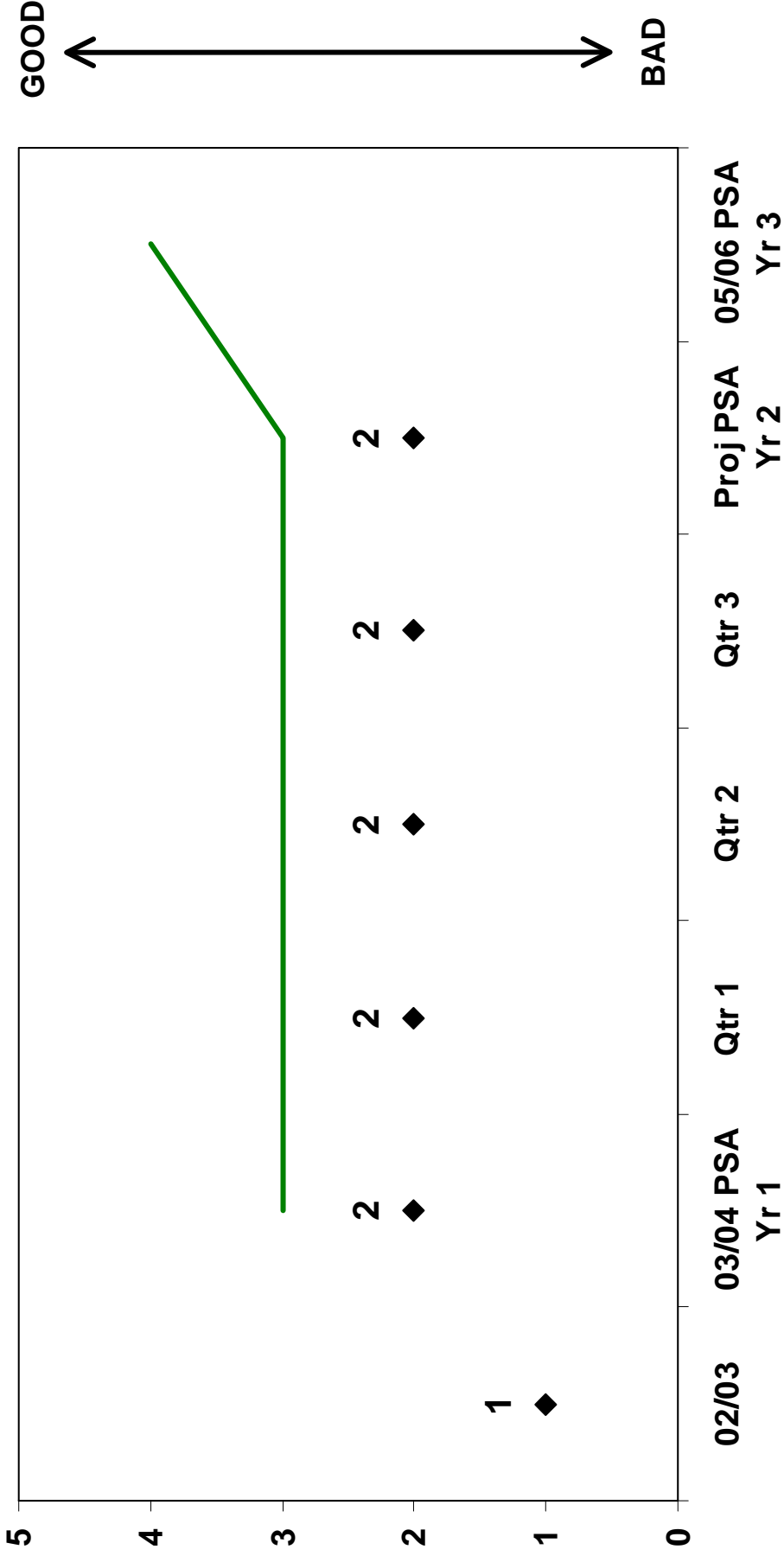


◆ Barking & Dagenham

— PSA Target

PSA

**PSA Target 12 (2) - Improving the natural environment
Number of parks achieving the National Green Flag Park
Standard**

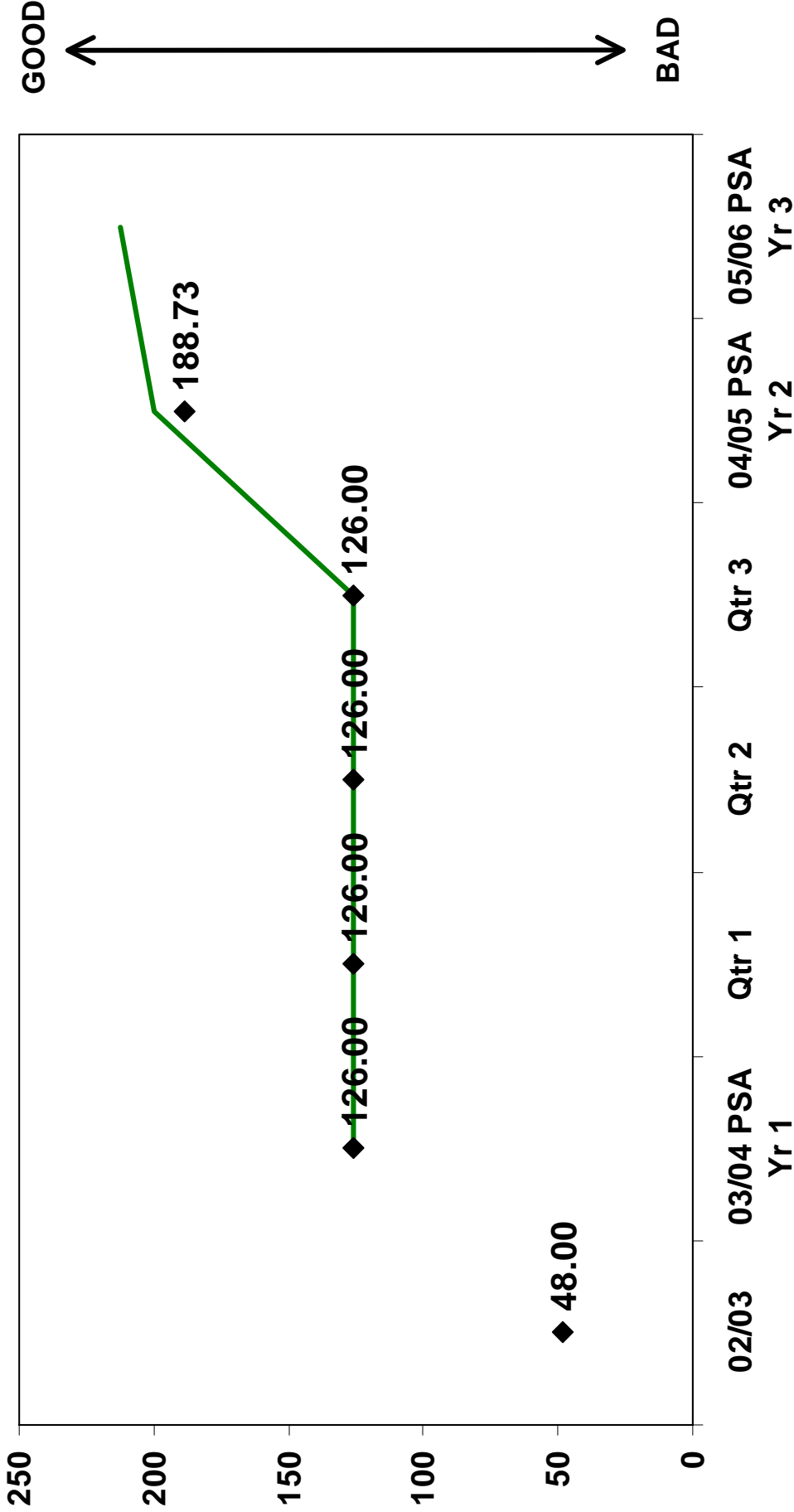


◆ Barking & Dagenham

— PSA Target

PSA

**PSA Target 12 (3) - Improving the natural environment
Number of hectares of Local Nature Reserves designated by
English Nature (cumulative since 02/03 baseline)**

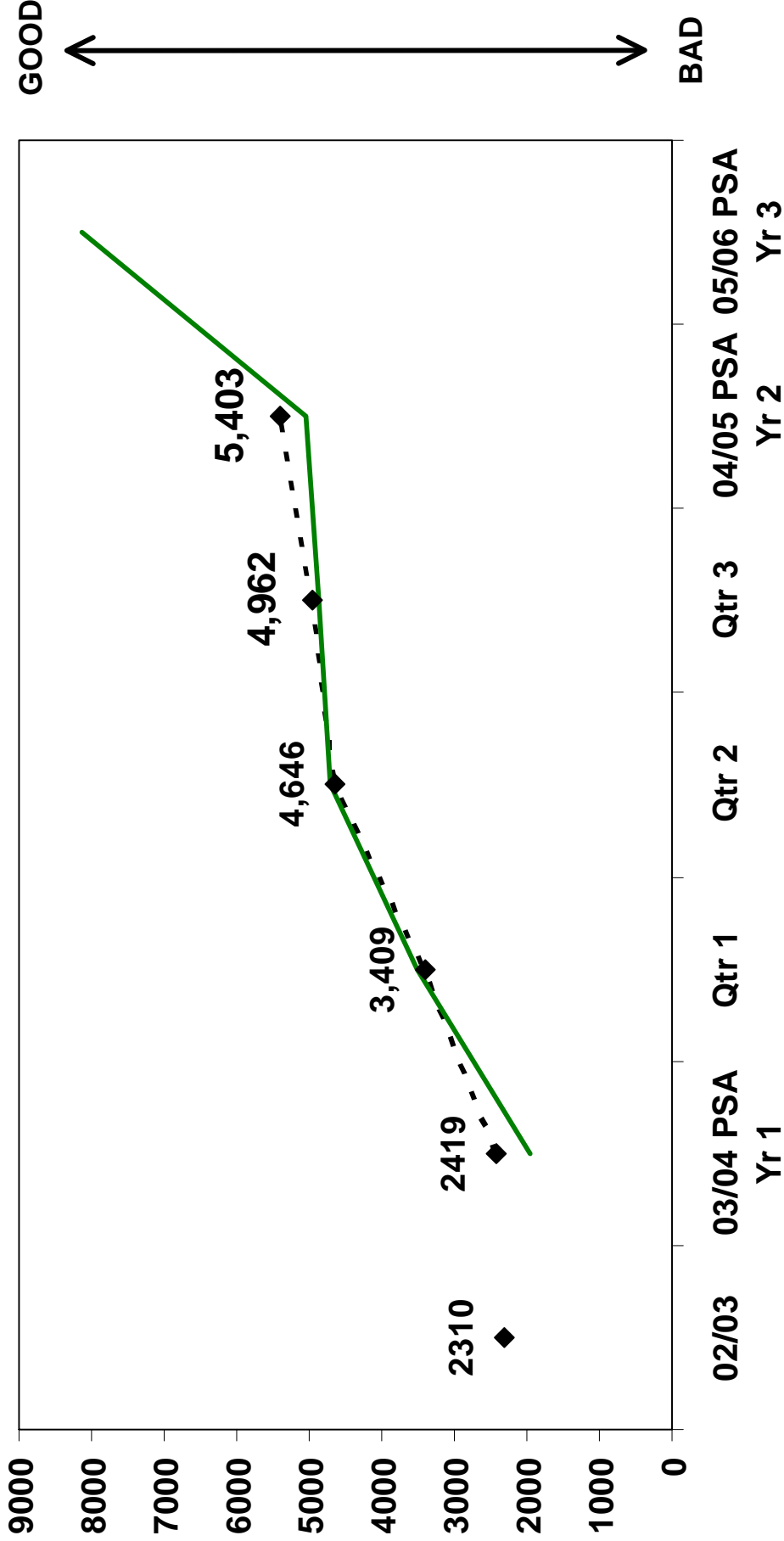


◆ Barking & Dagenham

— PSA Target

PSA

PSA Target 12 (4) - Increasing awareness & use of the natural environment - Number of pupils completing a study course at the Millennium Centre (cumulative over 3 year period of PSA)

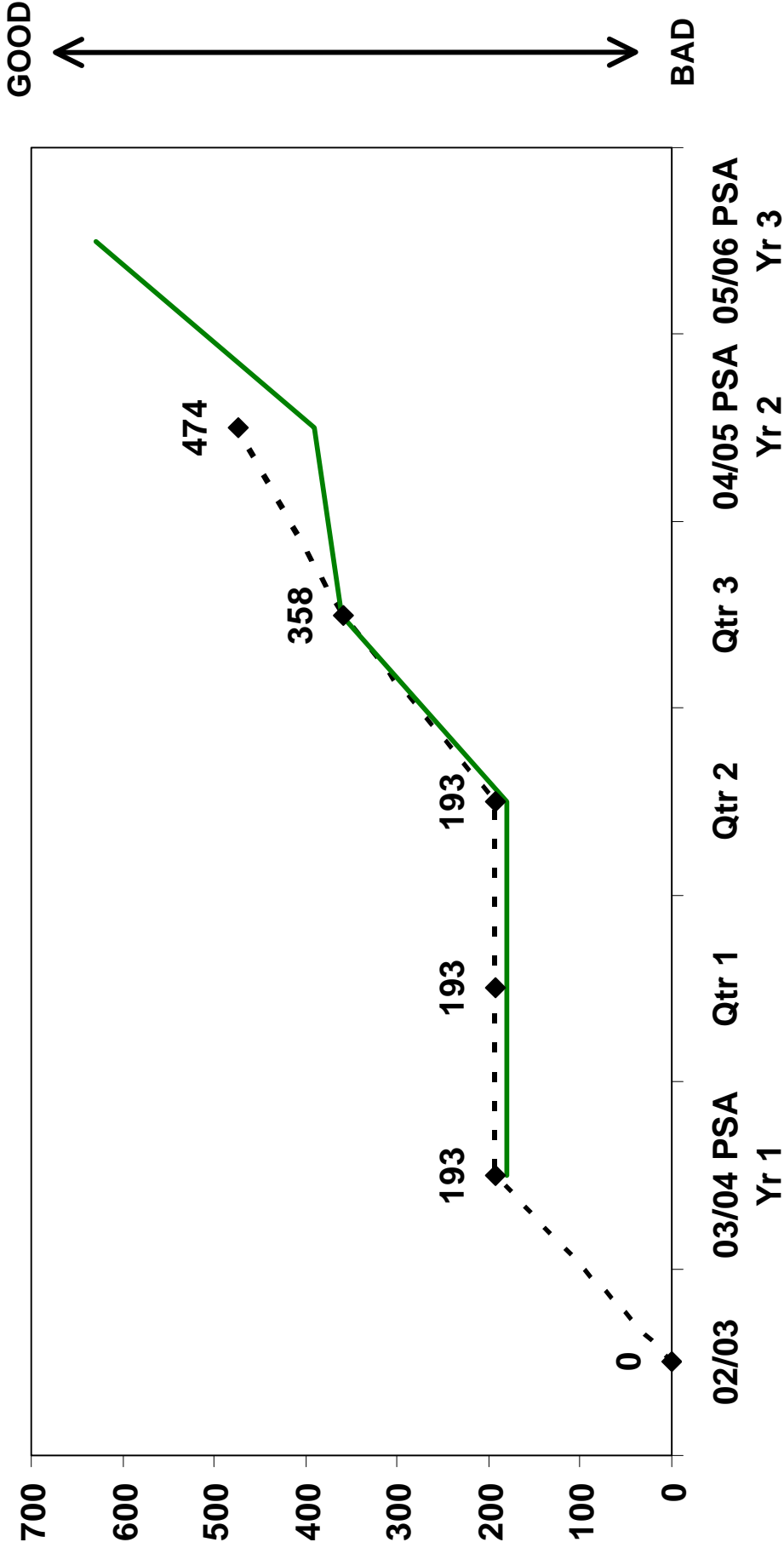


- ◆ - Barking & Dagenham

— PSA Target

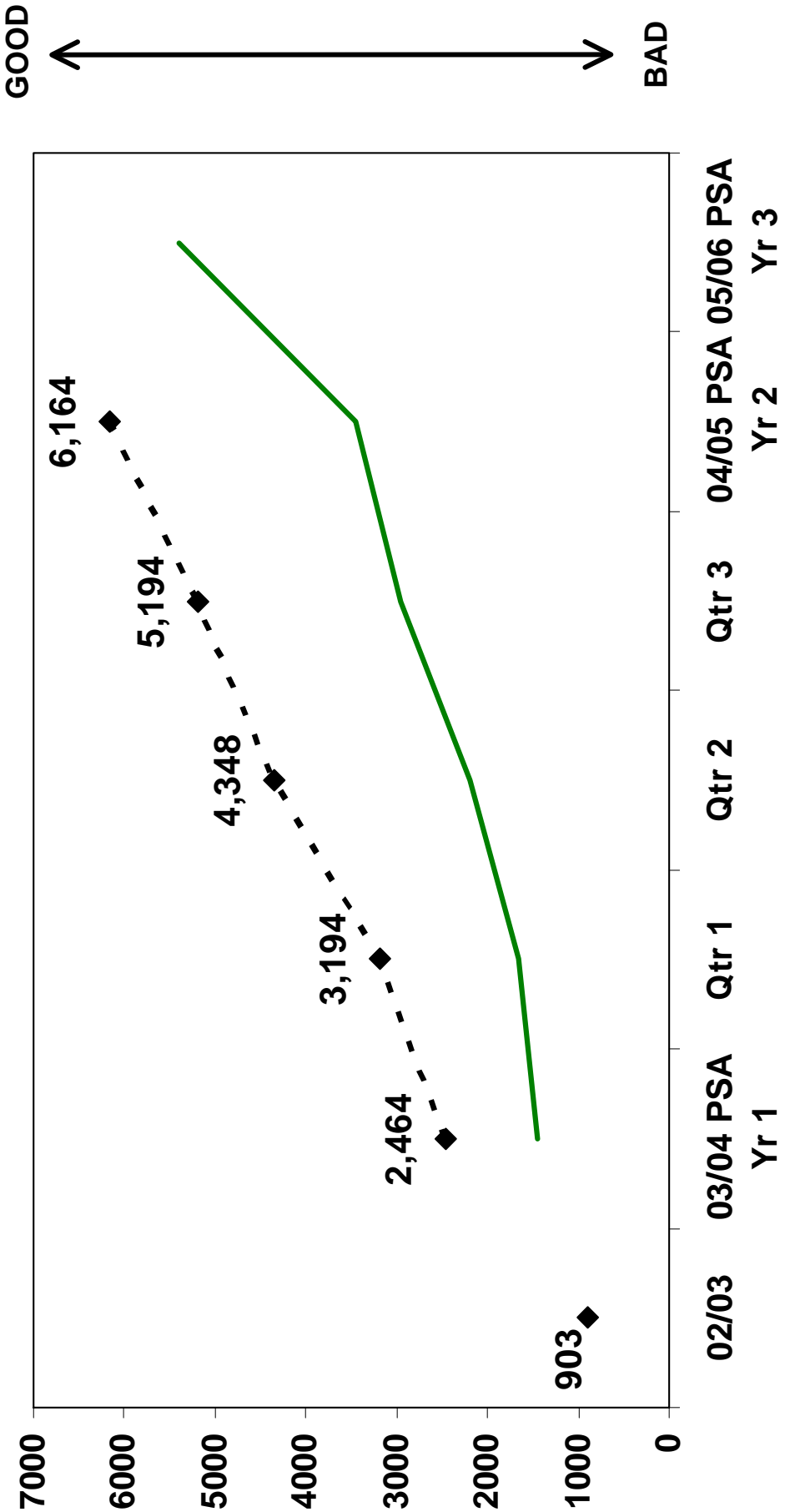
PSA

PSA Target 12 (5) - Increasing awareness & use of the natural environment - Number of pupils completing an educational course in Parks and Green Spaces (cumulative over 3 year period of PSA)



PSA

PSA Target 12 (6) - Increasing awareness & use of the natural environment - Number of participants in Healthy Lifestyle programmes and practical environmental projects in parks (cumulative over 3 year period of PSA)



- ◆ - Barking & Dagenham

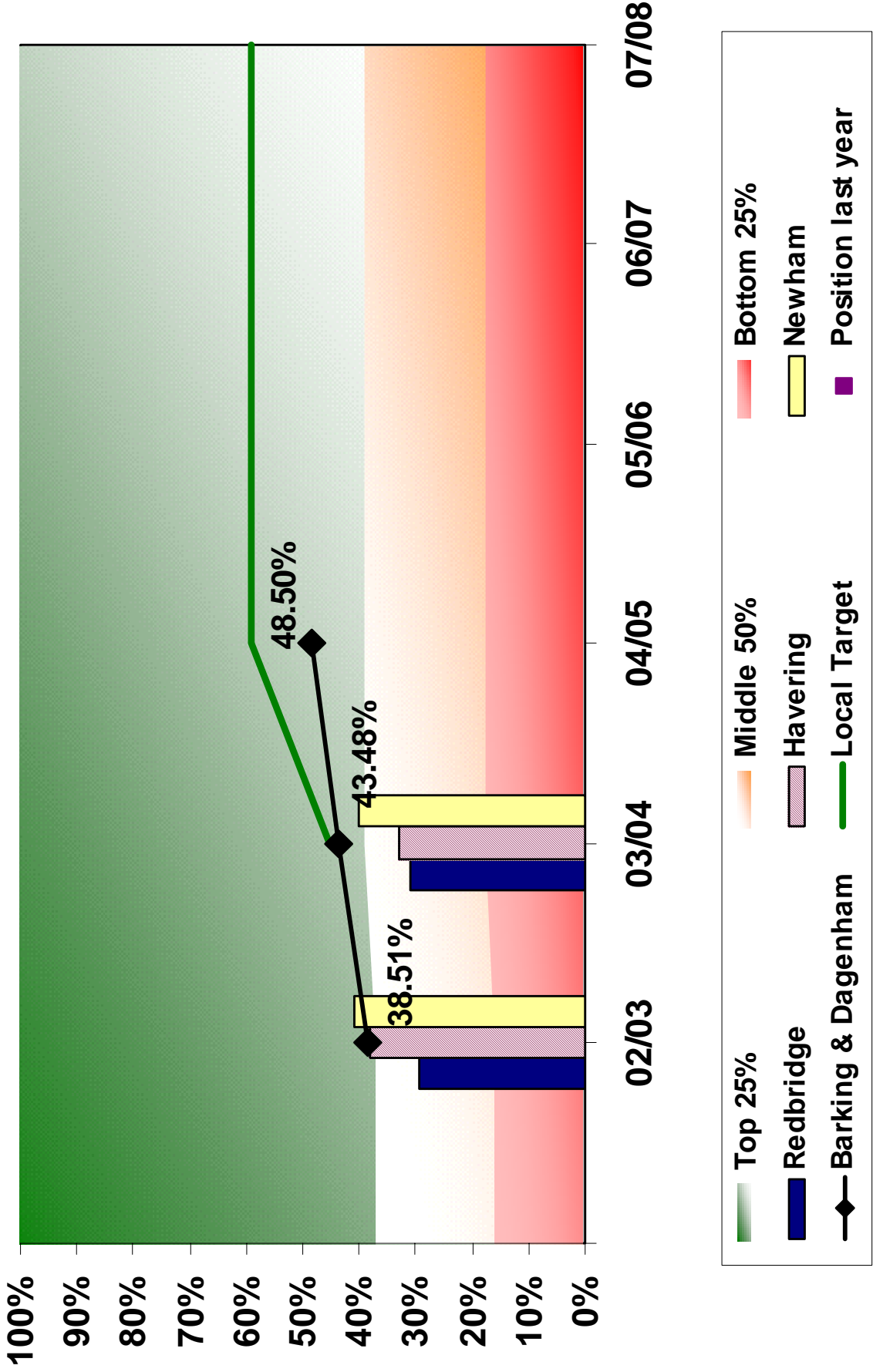
— PSA Target

Department of Corporate Strategy

CORPORATE STRATEGY - HR



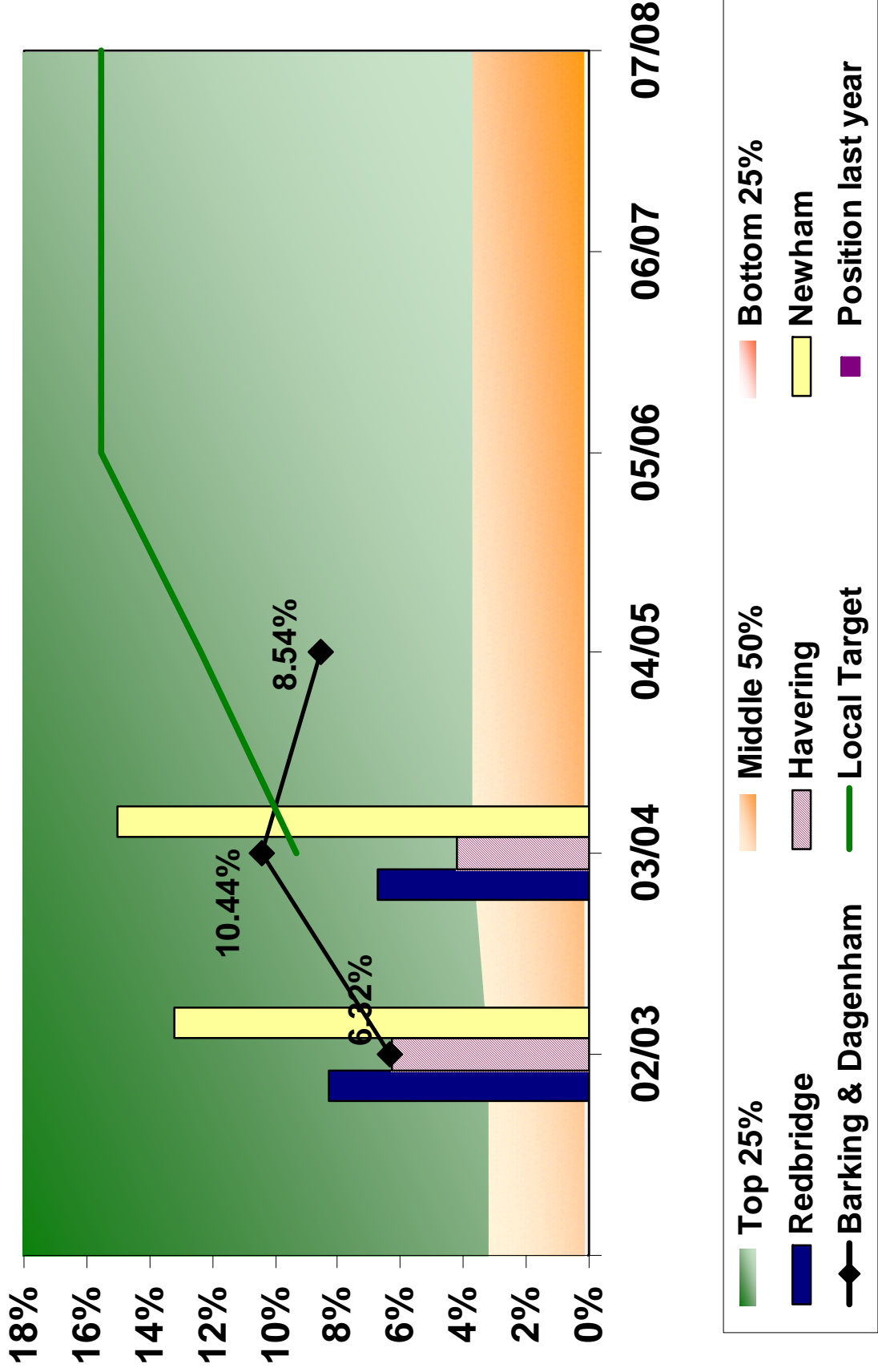
BVPI 11a - The percentage of top 5% of earners that are women (cumulative)



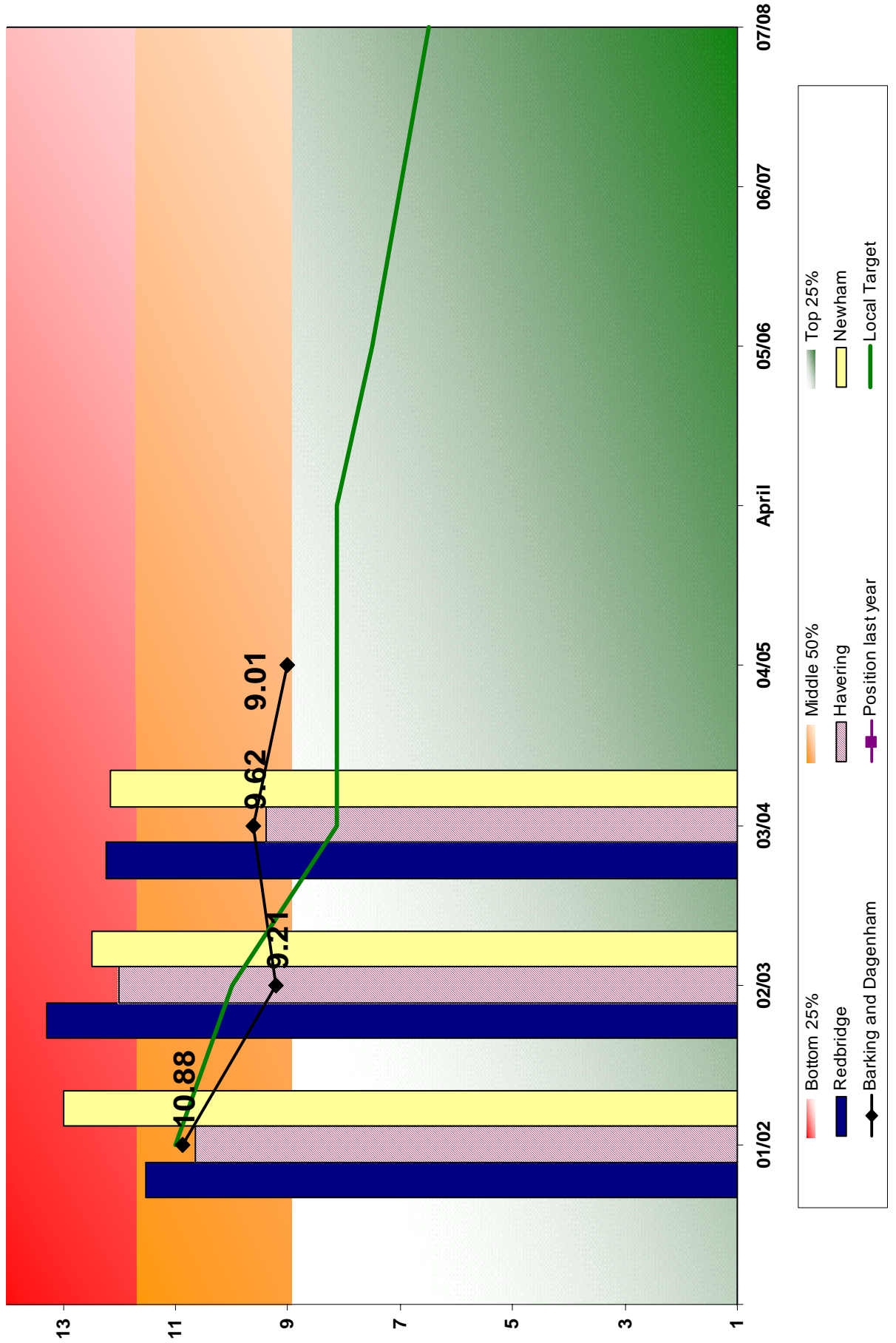
CORPORATE STRATEGY - HR



BVPI 111b - The percentage of top 5% of earners from black and minority ethnic communities (cumulative)



CORPORATE STRATEGY - HR
CS 19a (BV 12) - The number of working days / shifts lost to sickness absence
(days) (cumulative)



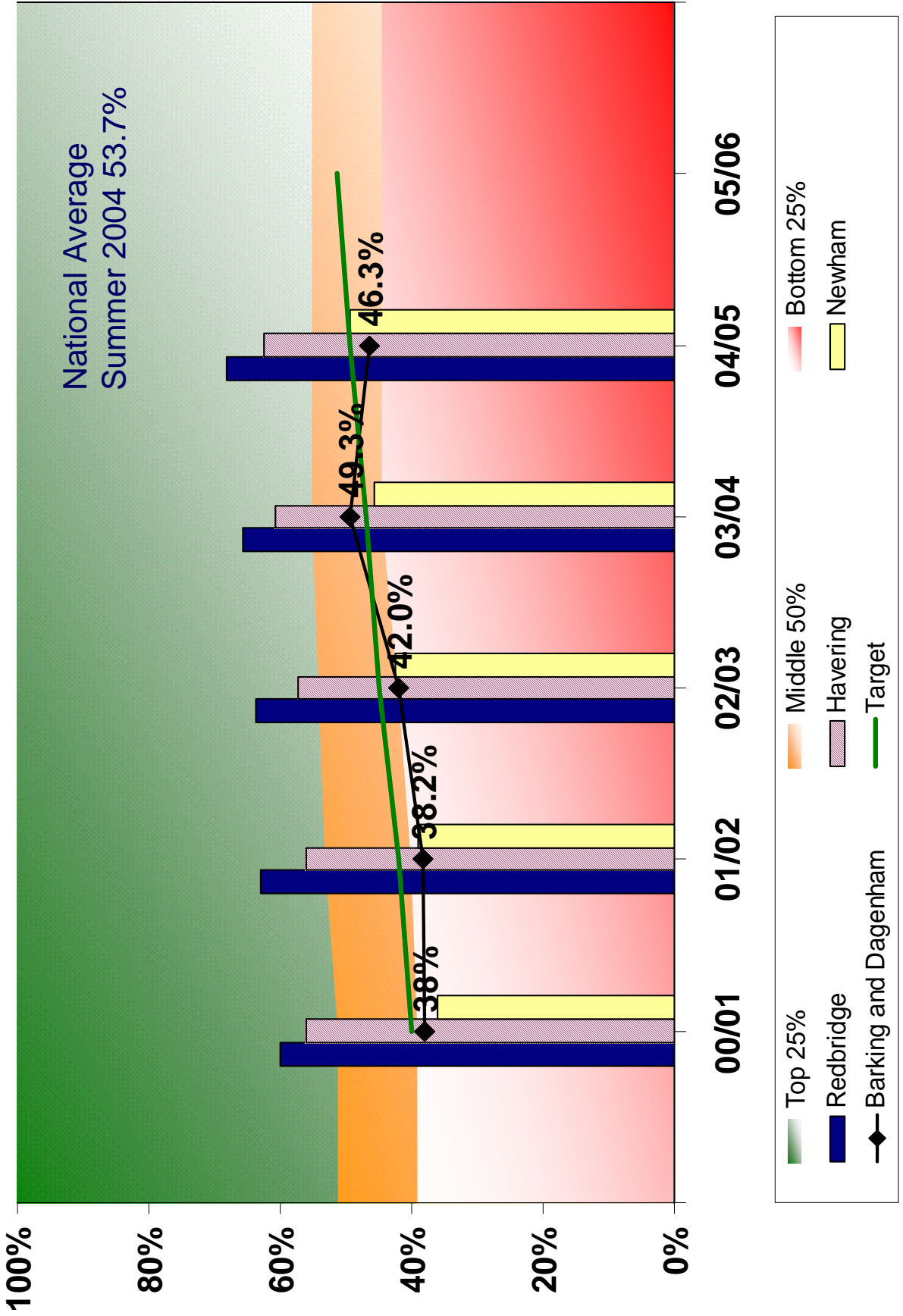
Department of Education, Arts and Libraries

DEAL - Lifelong Learning and Inclusion



BV 38 - Percentage of 15 year olds achieving 5 or more GCSEs at grades A* to C

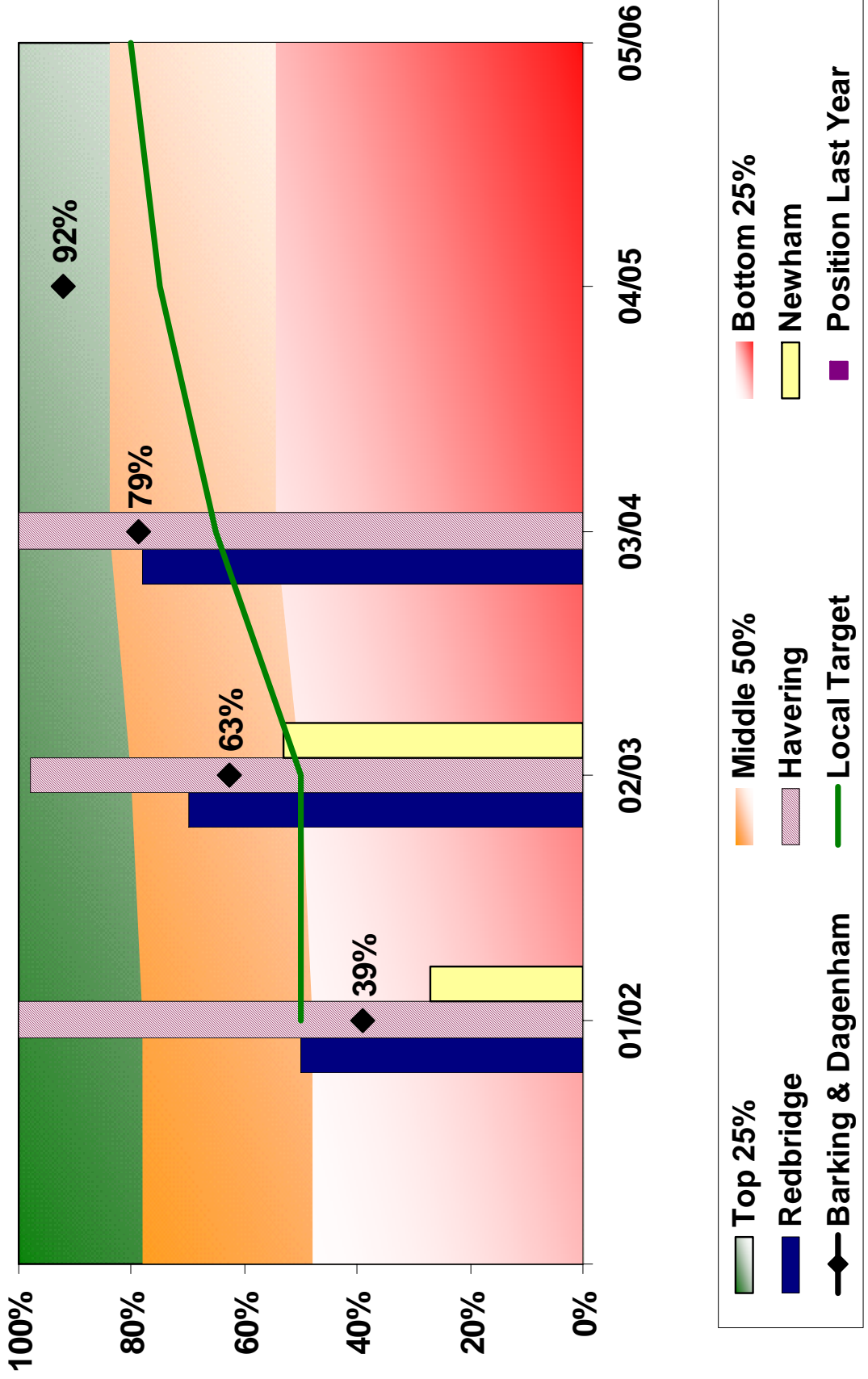
A* to C



High Risk

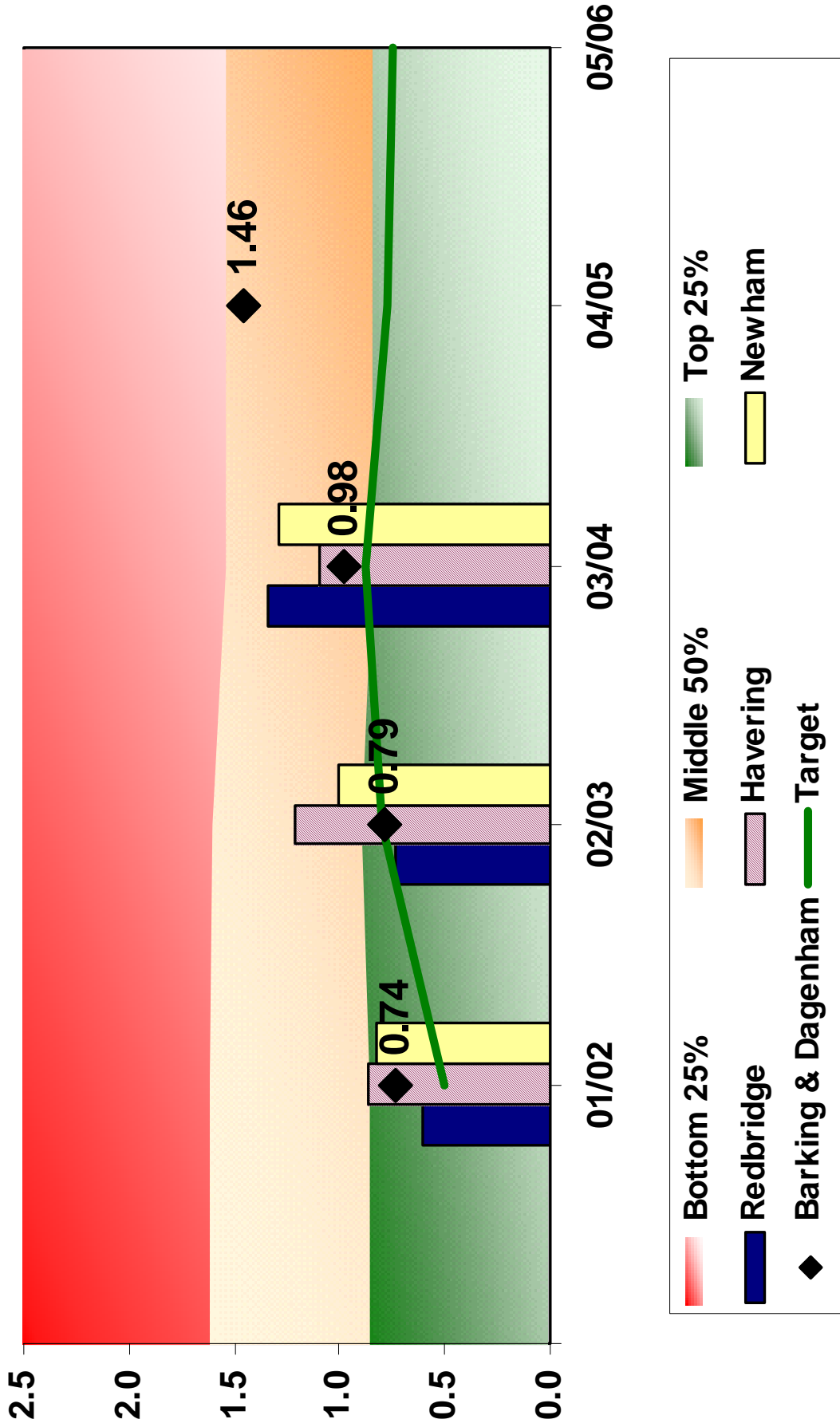


DEAL - Lifelong Learning and Inclusion
BV 43b - Percentage of statements prepared within
18 weeks including those involving other agencies (cumulative)

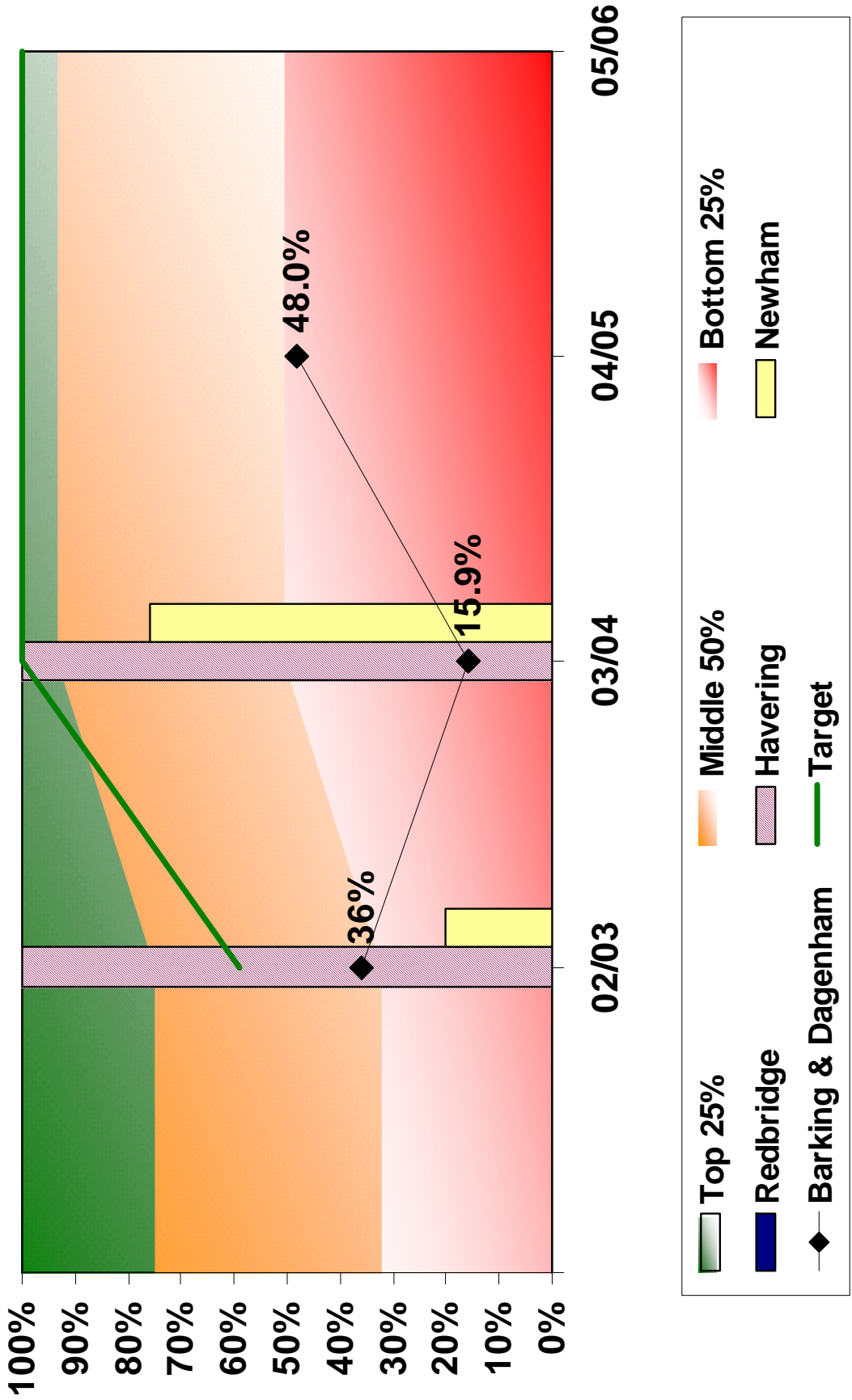


DEAL - Social Inclusion and Psychology

BV44: Number of pupils permanently excluded during the year from all schools maintained by the local education authority per 1,000 pupils at all maintained schools (cumulative)

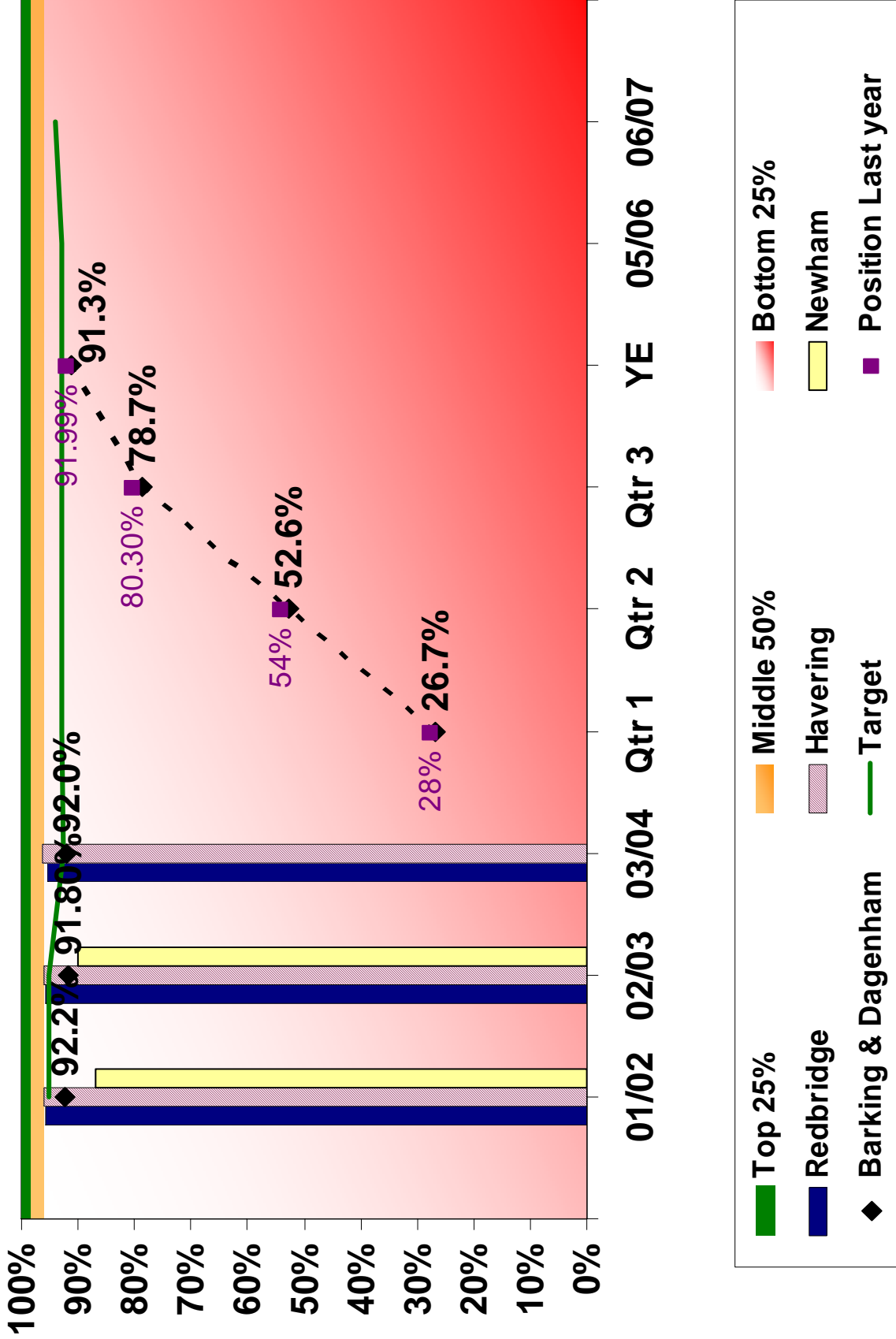


DEAL - Lifelong Learning and Inclusion
BV 159d - The Percentage of Permanently Excluded Pupils
Provided with Alternative Tuition of 20 hours or more (cumulative)



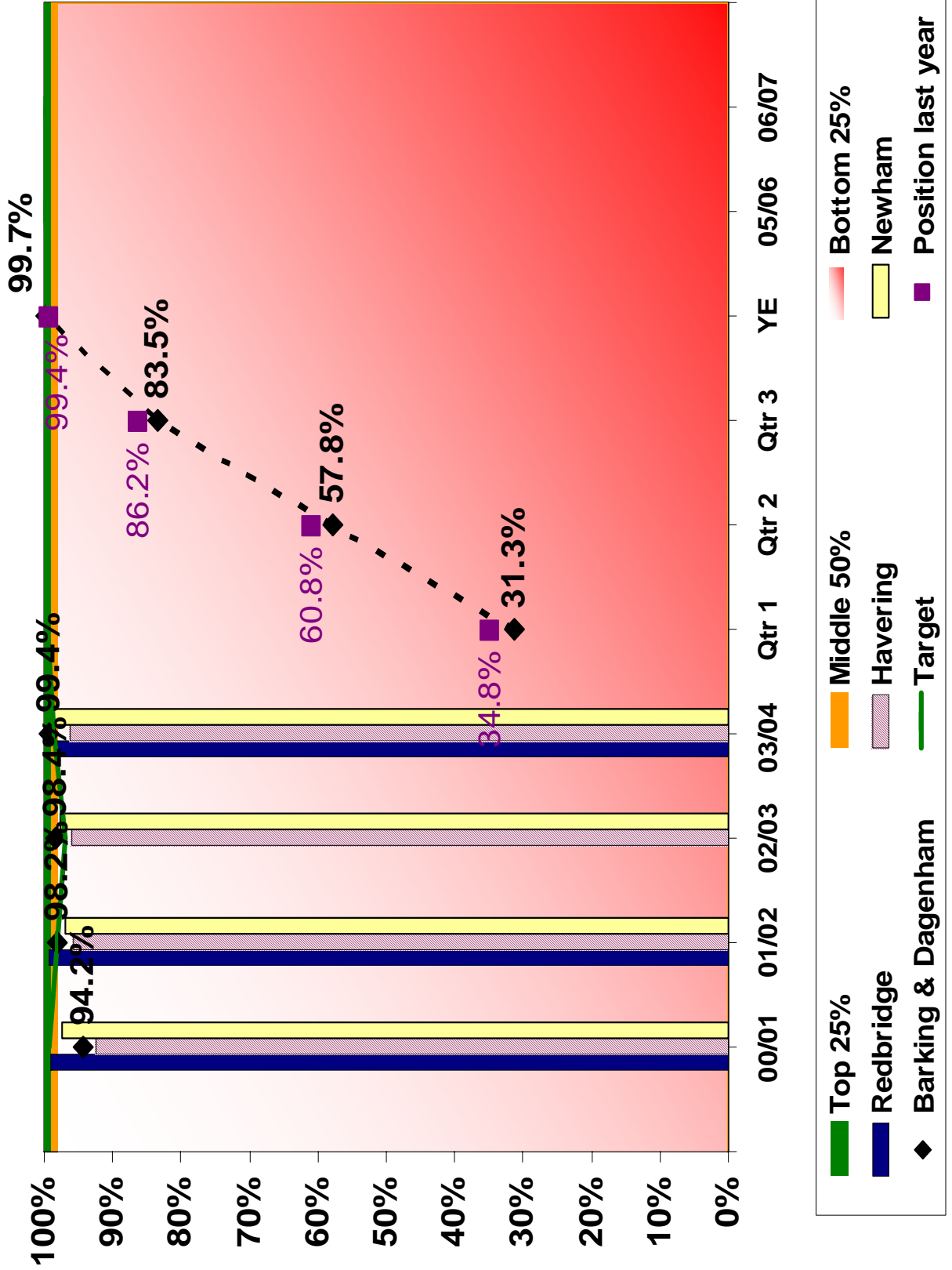
Department of Finance

**FINANCE - Council Tax
BV 9 - Percentage of Council Tax collected (cumulative)**





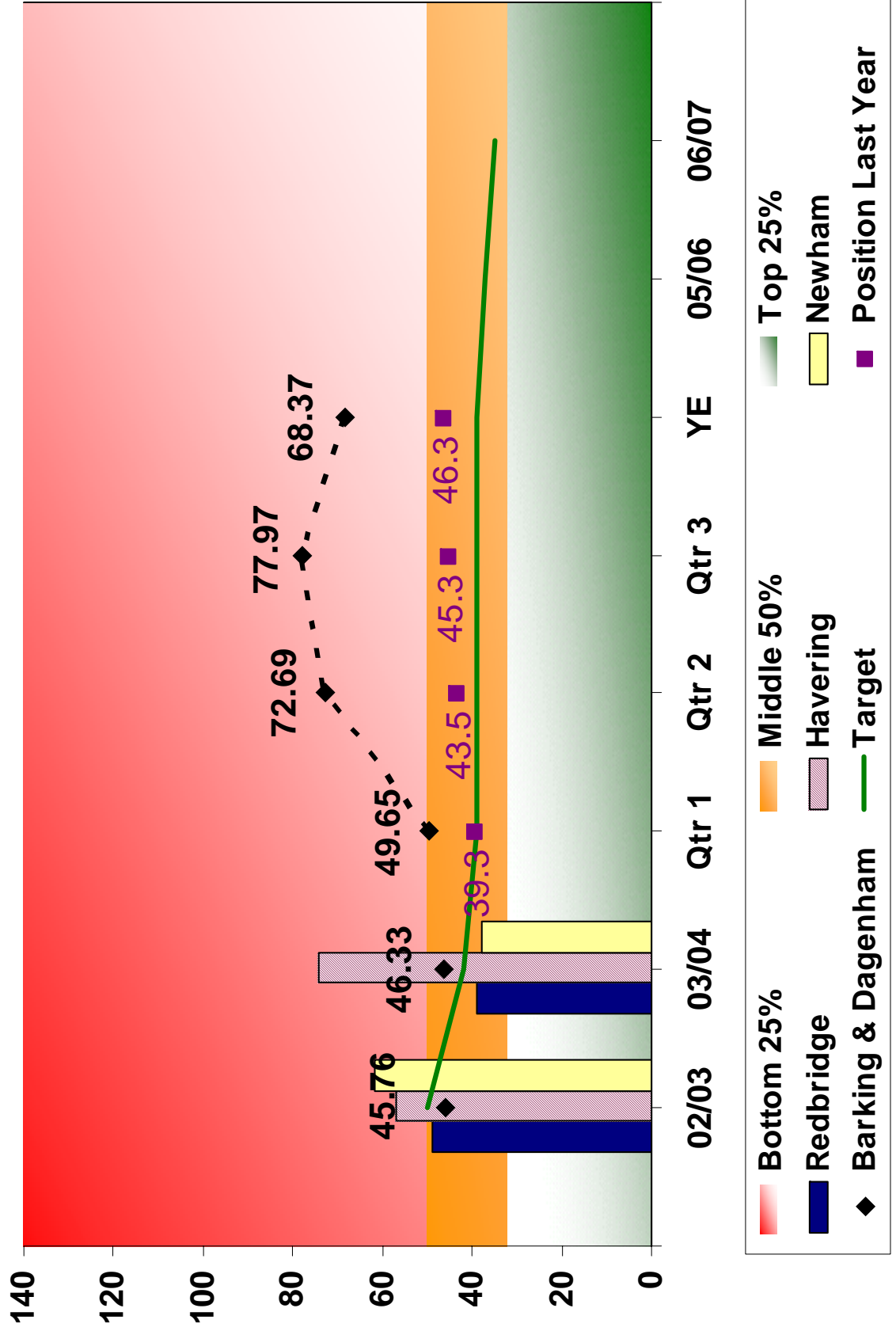
FINANCE - National Non-Domestic Rates
BV 10 - The percentage of business rates which should have been received during the year that were received (cumulative)



High Risk

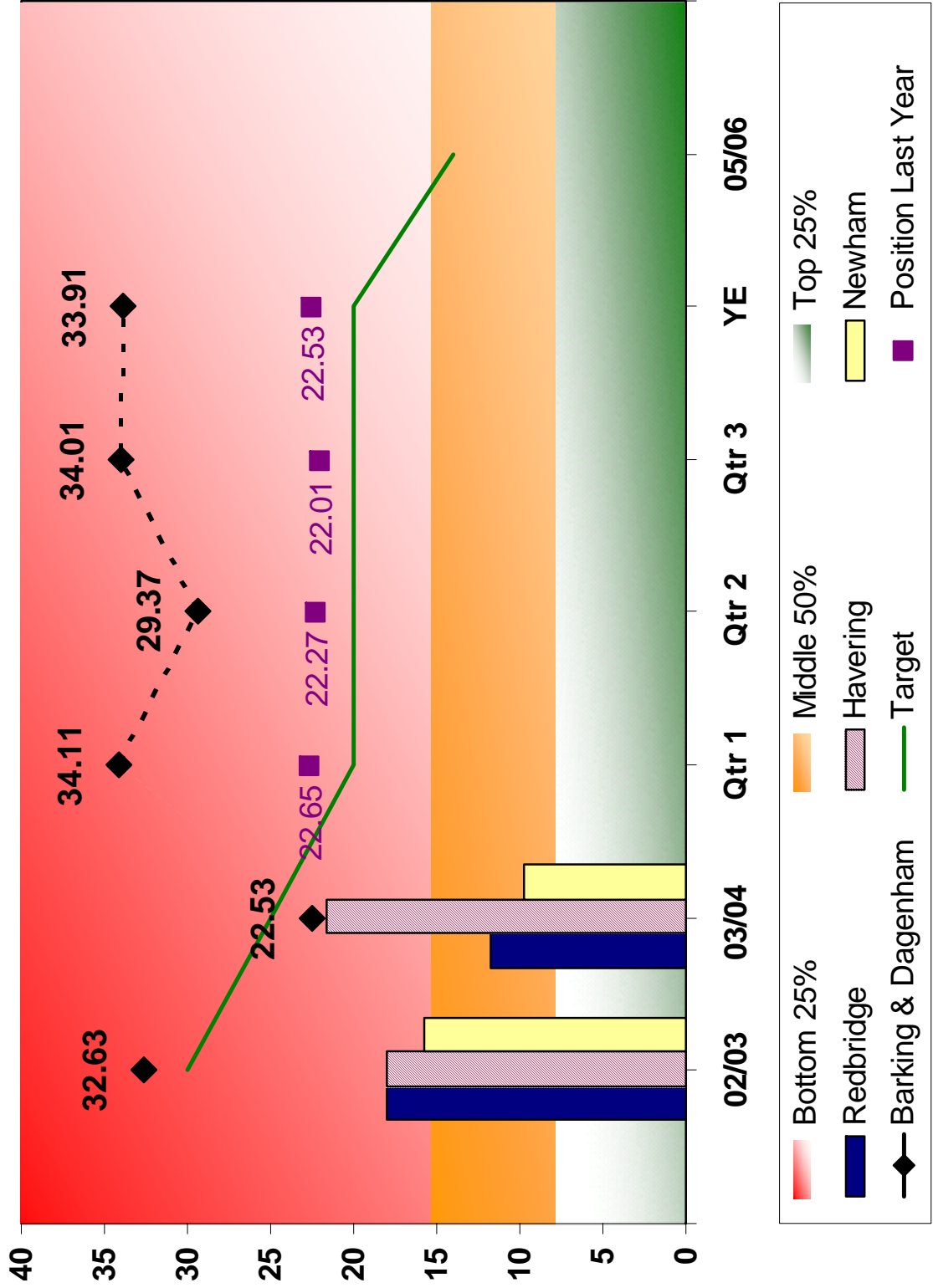


FINANCE - Housing & Council Tax Benefit BV 78a - Average time for processing new claims (cumulative)





**FINANCE - Housing & Council Tax Benefit
 BV 78b - Average time for processing notifications of changes of
 circumstances (calendar days) (cumulative)**

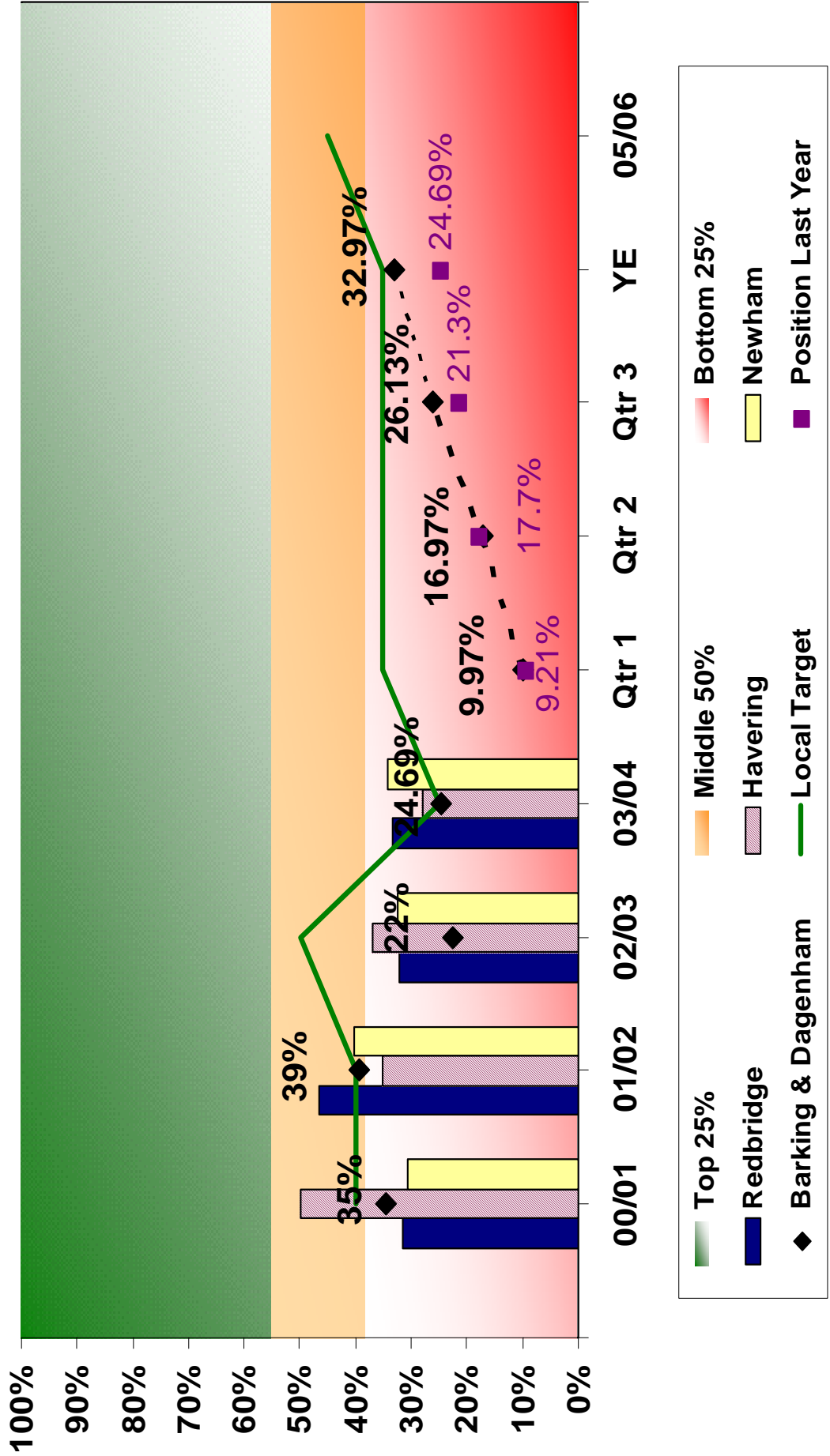


High Risk



FINANCE - Housing & Council Tax Benefit

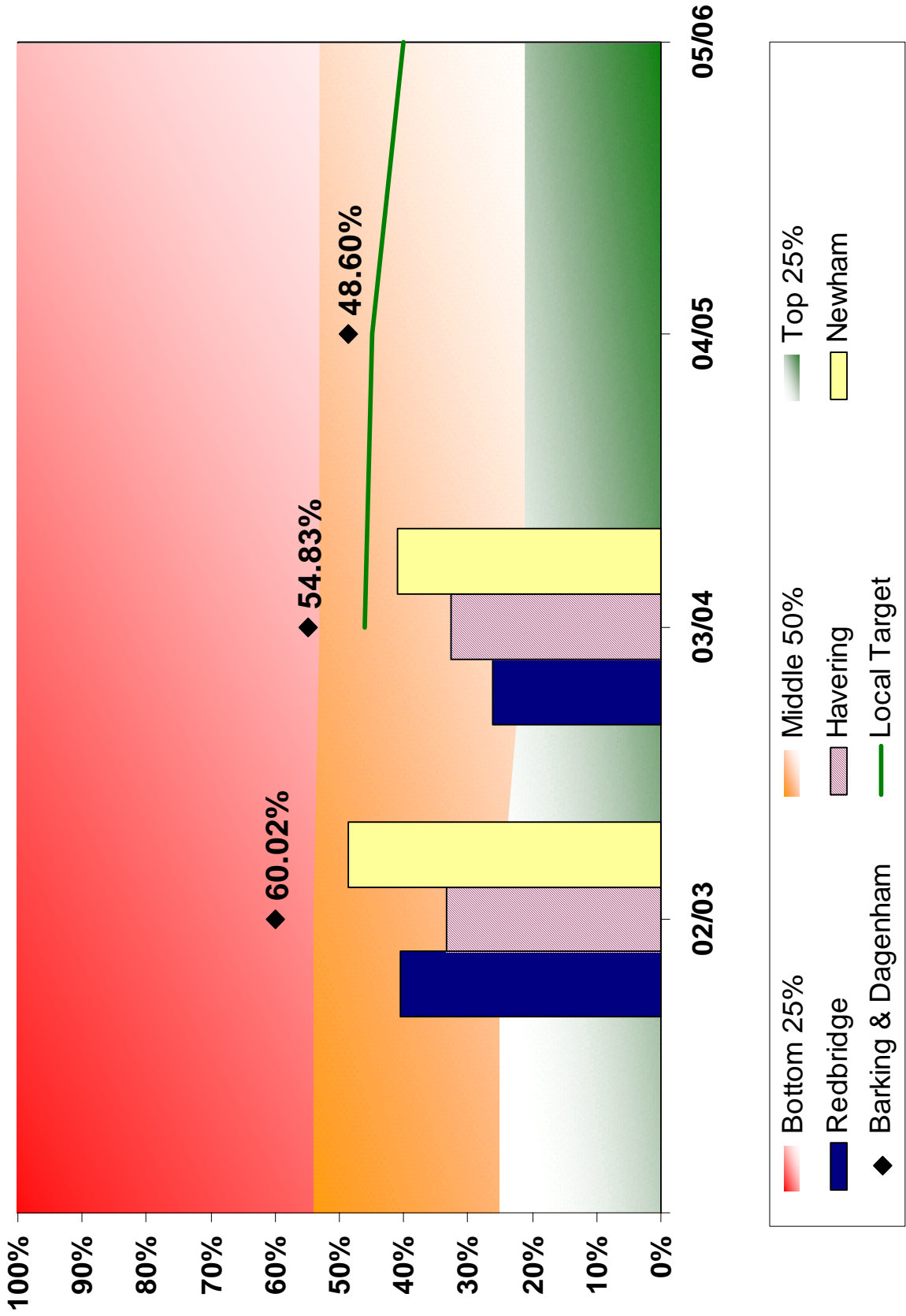
BV 79b - Percentage of recoverable overpayments (excluding Council Tax) that were recovered in the year (cumulative)



Department of Housing and Health

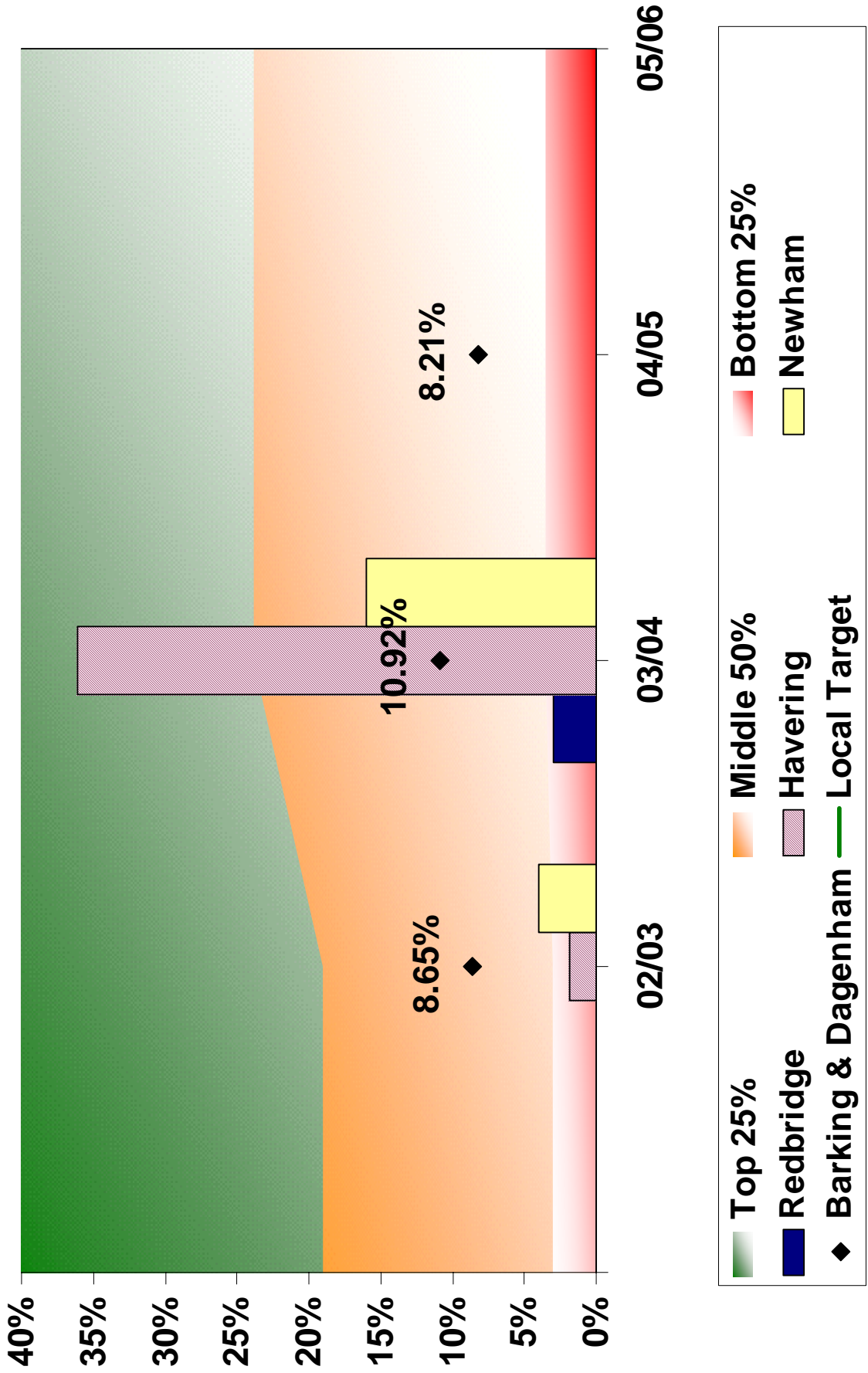


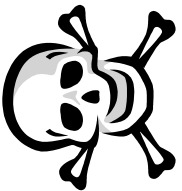
HOUSING & HEALTH - Housing Landlord Services
BV 184a - The proportion of LA homes which were non-decent at
1st April 2004





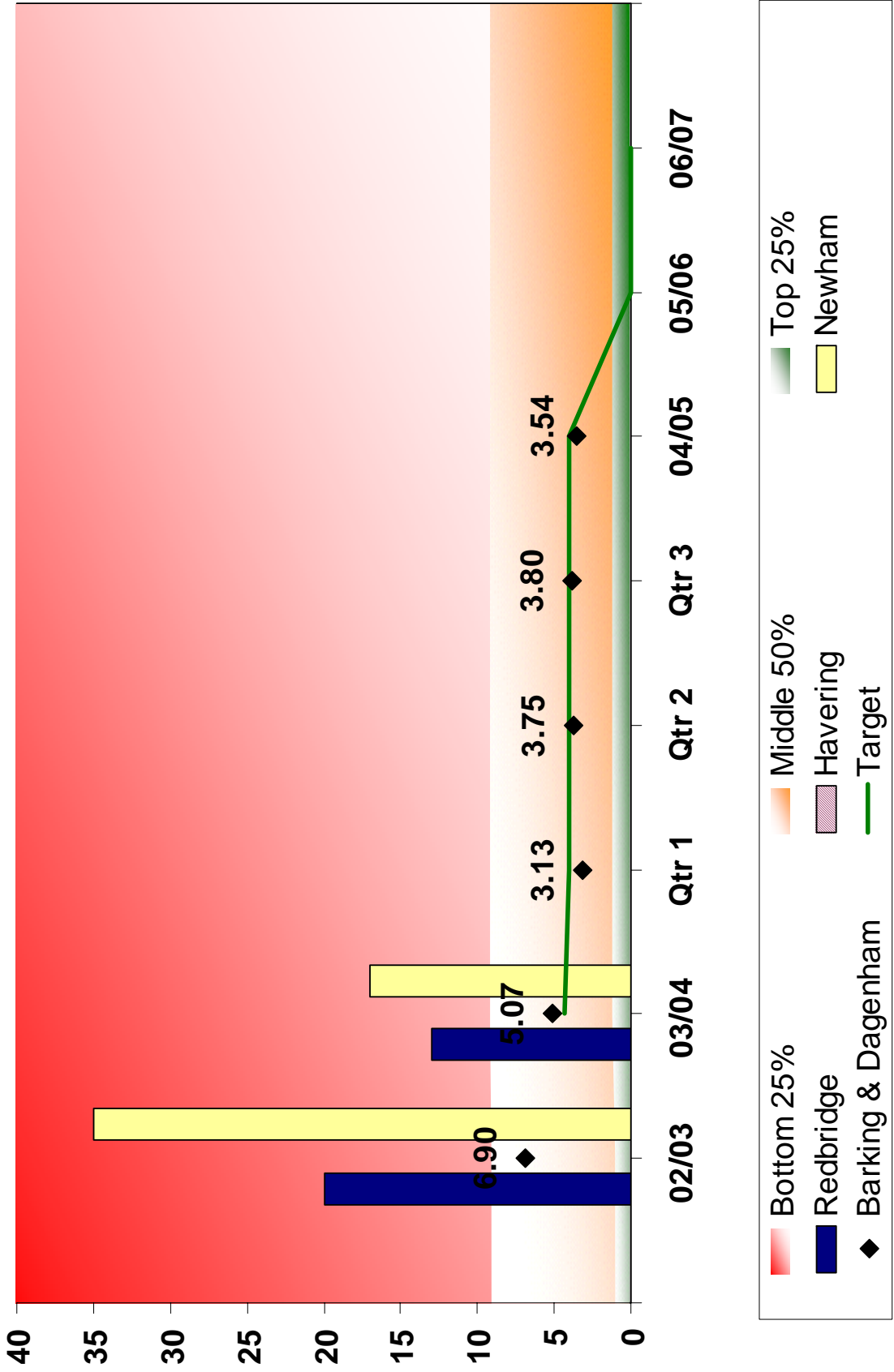
HOUSING & HEALTH - Housing Landlord Services
BV 184b - The percentage change in proportion of non-decent
L.A homes between 1 April 2004 and 1 April 2005





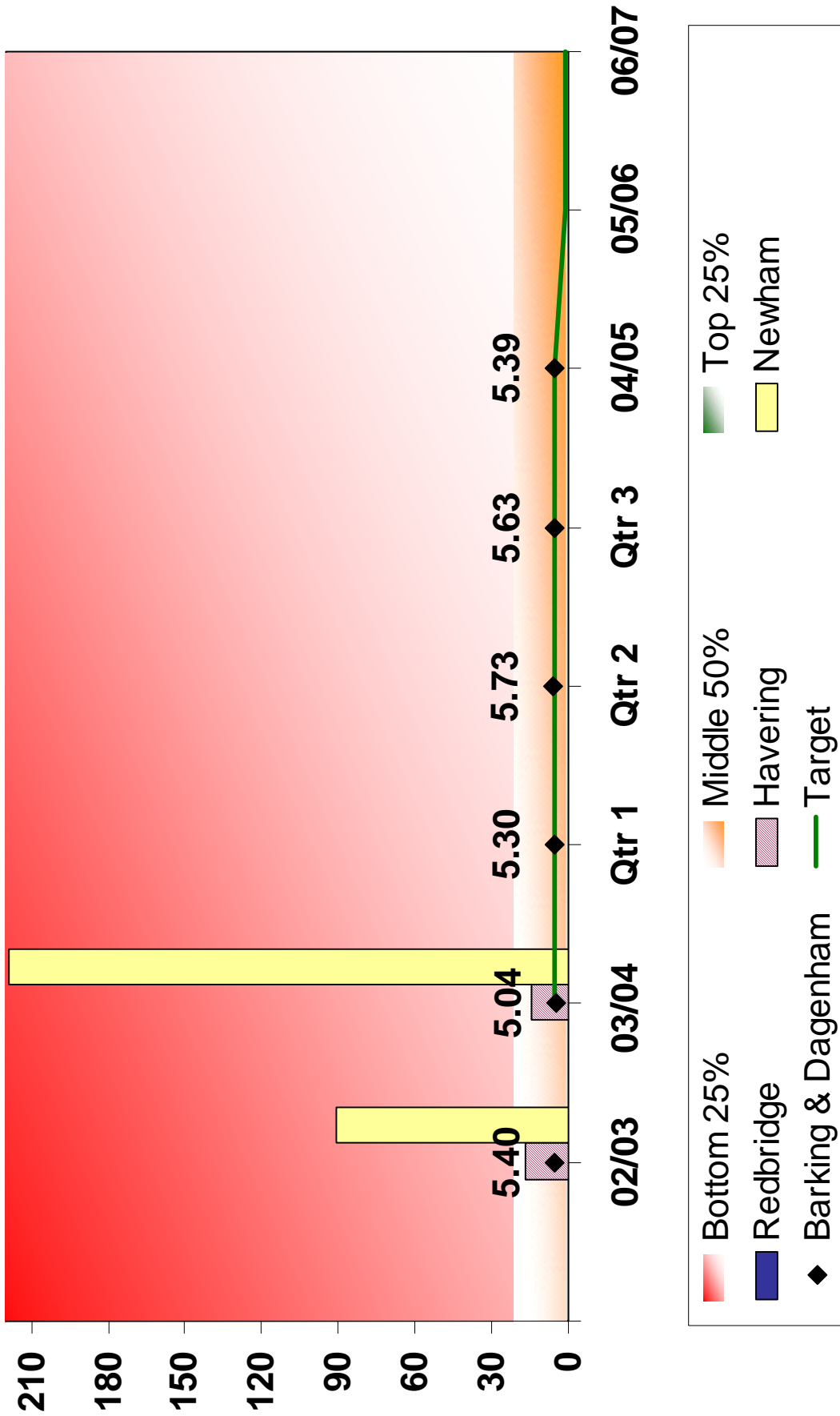
HOUSING & HEALTH - Housing Strategy

BV 183(a) - Average length of stay in bed and breakfast accommodation (weeks)





HOUSING & HEALTH - Housing Strategy
BV 183(b) - Average length of stay in hostel
accommodation (weeks)

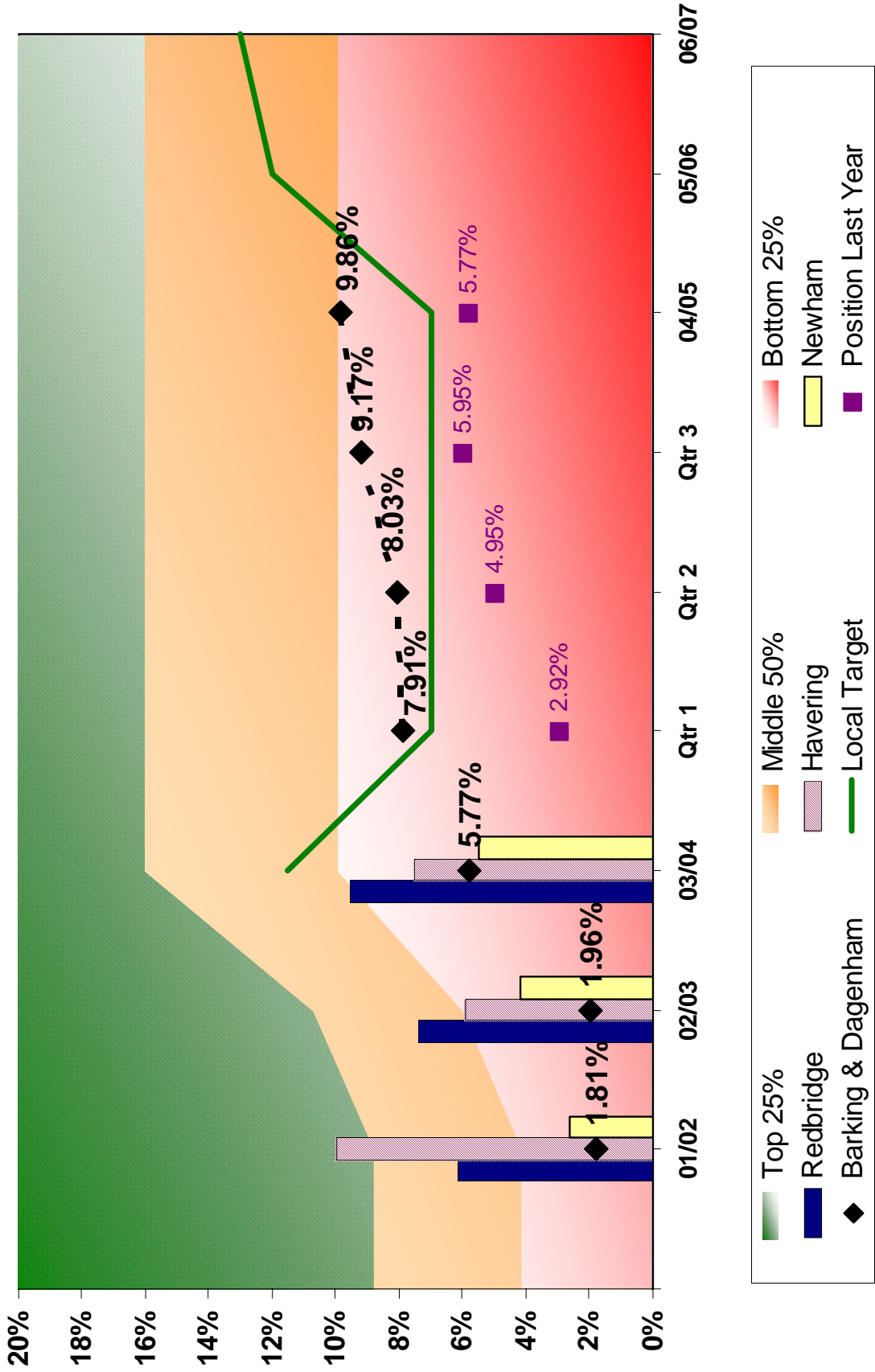


Department of Regeneration and Environment



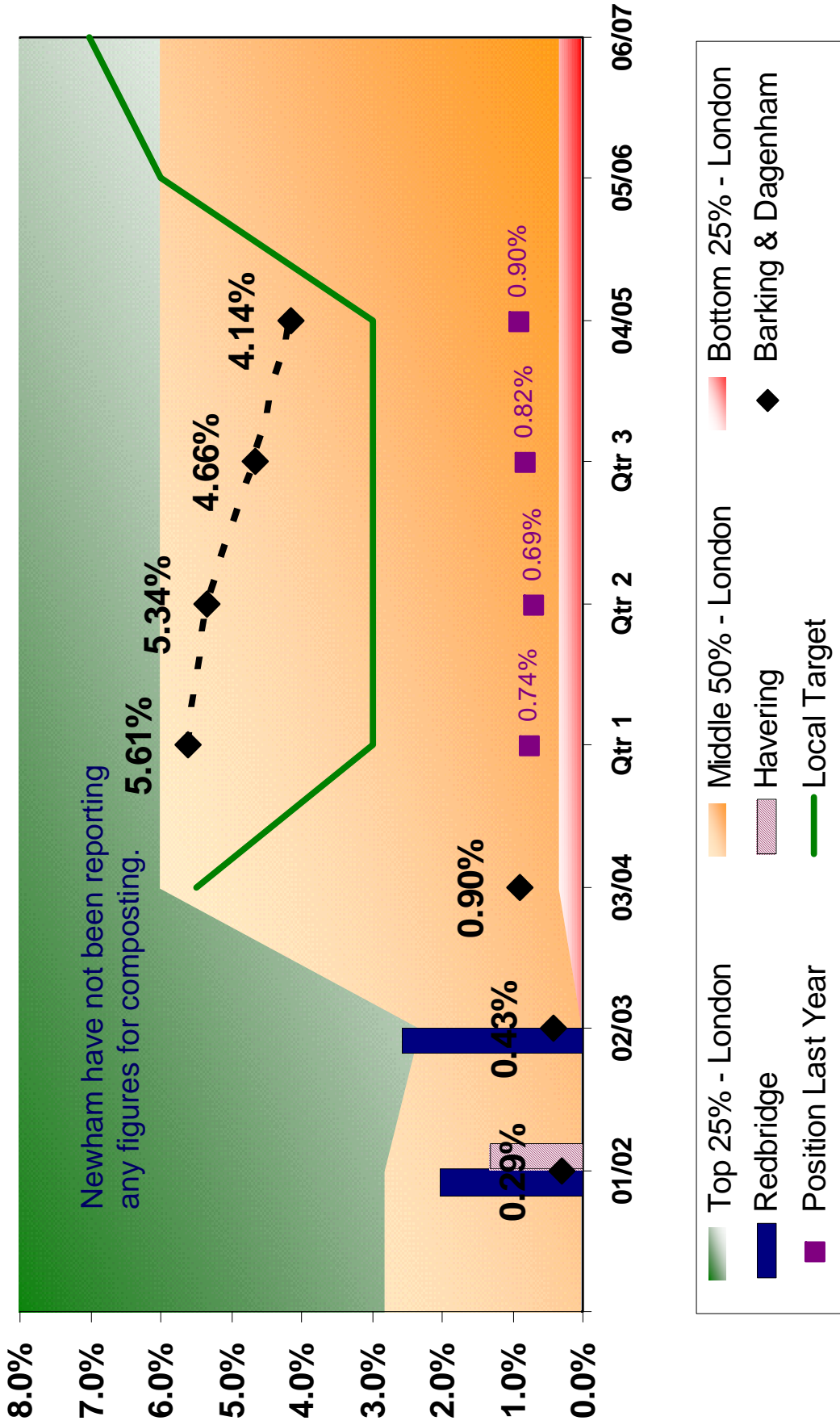
DRE - Recycling & CA Site

BVPI 82a - Total tonnage of household waste arisings - %age recycled (cumulative)





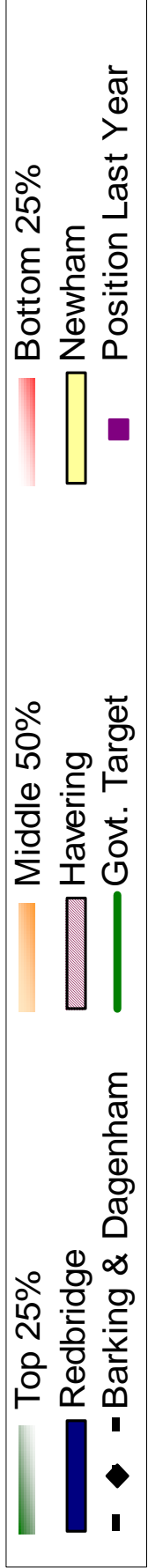
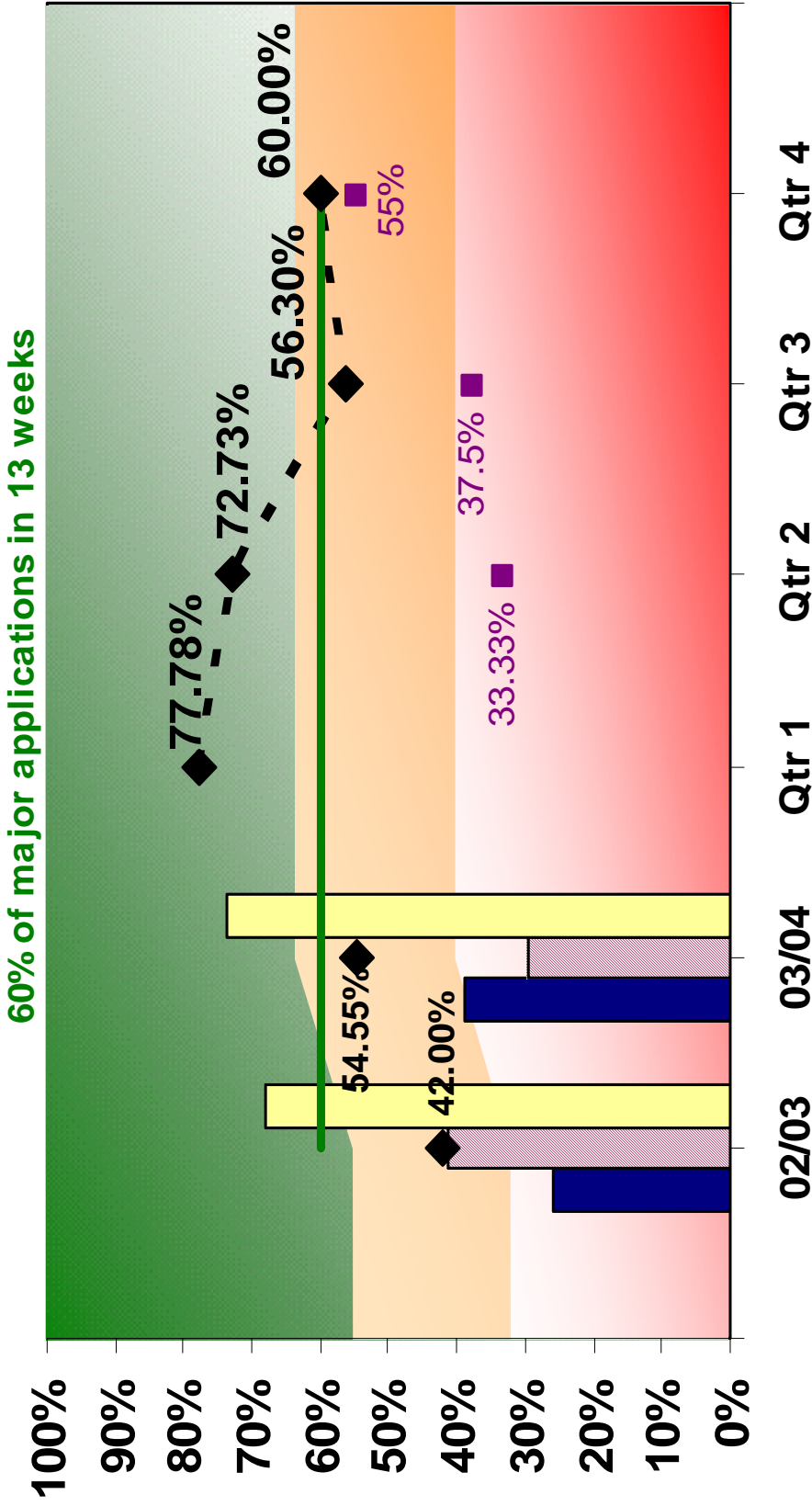
DRE - Recycling & CA Site
BVPI 82b - Total tonnage of household waste arisings - percentage composted (cumulative)





DRE - Planning & Building Control

BV109a - The percentage of applications determined in line with the Government's new development control targets to determine:

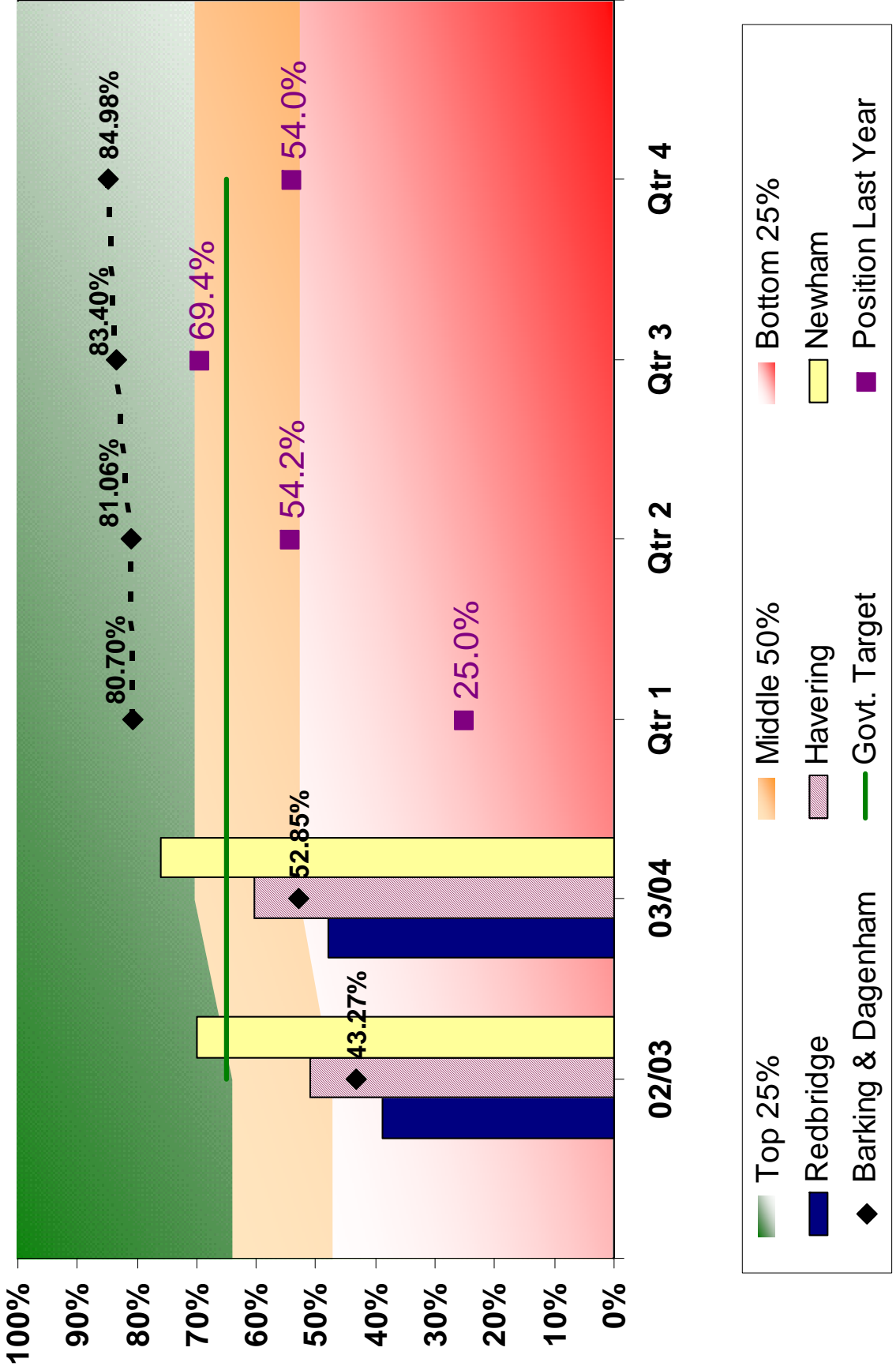




DRE - Planning & Building Control



BV109b - The percentage of applications determined in line with the Government's new development controls to determine: 65% of minor applications in 8 weeks





DRE - Planning & Building Control



BV109c - The percentage of applications determined in line with the Government's new development control targets to determine: 80% of other applications in 8 weeks

